

HC/EC

Wall mounted axial fans, with EC Technology IE5 motor



Wall mounted axial fans with EC Technology IE5 motor with integrated electronics, specially designed for high energy efficiency.

Fan:

- Airflow direction from motor to impeller.
- Fibreglass reinforced polyamide-6 impeller.
- Steel sheet support frame.
- Protection grid against contacts according to UNE-EN ISO 12499.
- Models 71, 80, 90 and 100: The protection grid is supplied as an accessory.

Motor:

- High efficiency EC Technology motors with integrated electronics, regulated by 0-10 V or 4-20 mA.
- IE5 efficiency motors, class F and IP55 protection.
- Single-phase 220-277 V 50/60 Hz and three-phase 380-480 V 50/60 Hz.
- Working temperature: -20 °C +60 °C.
- Modbus RTU and built-in alarm relay (three-phase models).

EC CONTROL:

Supplied as an optional accessory. Control panel for ventilation systems with EC Technology motors with the electronics integrated in the motor itself.

With the following characteristics:

- CPC: Constant pressure control.
- CFC: Constant flow control.
- DAY/NIGHT: Double pressure setpoint adjustment according to time of day.
- External sensor: Compatible with temperature, humidity, air quality or CO sensor.
- Equipment preconfigured in constant pressure mode with 100 Pa set point.

Finish:

- Anti-corrosive finish in polyester resin, polymerised at 190 °C, after degreasing with phosphate-free nanotechnology treatment.

On request:

- Airflow direction from impeller to motor.
- Motor, impeller and grille assembly (F version), except models 71, 80, 90 and 100, which are supplied without a grille.
- Motor and impeller assembly, version G.

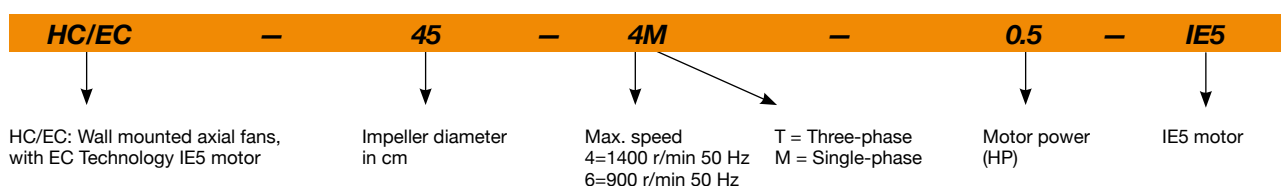


EC TECHNOLOGY MOTOR with integrated electronics



EC CONTROL Supplied as an optional accessory

Order code



Technical characteristics

Model	Speed (r/min)		Maximum admissible current (A)		Installed power (kW)	Maximum flow rate (m³/h)	Sound pressure level ¹ dB (A)		Approx. weight (Kg)
	min.	max.	230V	400V			Inlet		
HC/EC-45-4M-0.5 IE5	200	1400	3.40		0.37	7275	65	16	
HC/EC-45-4T-0.5 IE5	200	1400		0.75	0.37	7275	65	15	
HC/EC-50-4M-0.75 IE5	200	1420	4.80		0.55	10185	68	18	
HC/EC-50-4T-0.75 IE5	200	1420		1.10	0.55	10185	68	17	
HC/EC-56-4M-1.5 IE5	200	1455	8.90		1.10	12985	71	22	
HC/EC-56-4T-1.5 IE5	200	1455		2.16	1.10	12985	71	20	
HC/EC-63-4M-1.5 IE5	200	1455	8.90		1.10	16455	75	24	
HC/EC-63-4T-1.5 IE5	200	1455		2.16	1.10	16455	75	22	
HC/EC-71-4T-2 IE5	200	1440		2.91	1.50	22170	79	32	

Technical characteristics

Model	Speed (r/min)		Maximum admissible current (A)		Installed power (kW)	Maximum flow rate (m³/h)	Sound pressure level¹ dB (A)	Approx. weight (Kg)
	min.	max.	230V	400V				
HC/EC-71-6M-1.5 IE5	200	900	8.90		1.10	17325	67	32
HC/EC-71-6T-1.5 IE5	200	900		2.16	1.10	17325	67	30
HC/EC-80-4T-3 IE5	200	1435		4.20	2.20	27855	84	52
HC/EC-80-4T-4 IE5	200	1440		5.66	3.00	32910	84	54
HC/EC-90-4T-5.5 IE5	200	1450		7.48	4.00	43715	88	64
HC/EC-90-6T-3 IE5	200	950		4.20	2.20	33355	78	60
HC/EC-100-4T-7.5 IE5	200	1465		9.57	5.50	55245	92	76
HC/EC-100-6T-3 IE5	200	950		4.20	2.20	37175	82	58

1. Sound pressure level in dB(A) at a distance of 1,5 m and at maximum flow rate.



Erp. (Energy Related Products)

Information on Directive 2009/125/EC can be downloaded from the SODECA website or the QuickFan selector programme.

Acoustic characteristics

The values given are obtained under laboratory conditions according to ISO 3744.

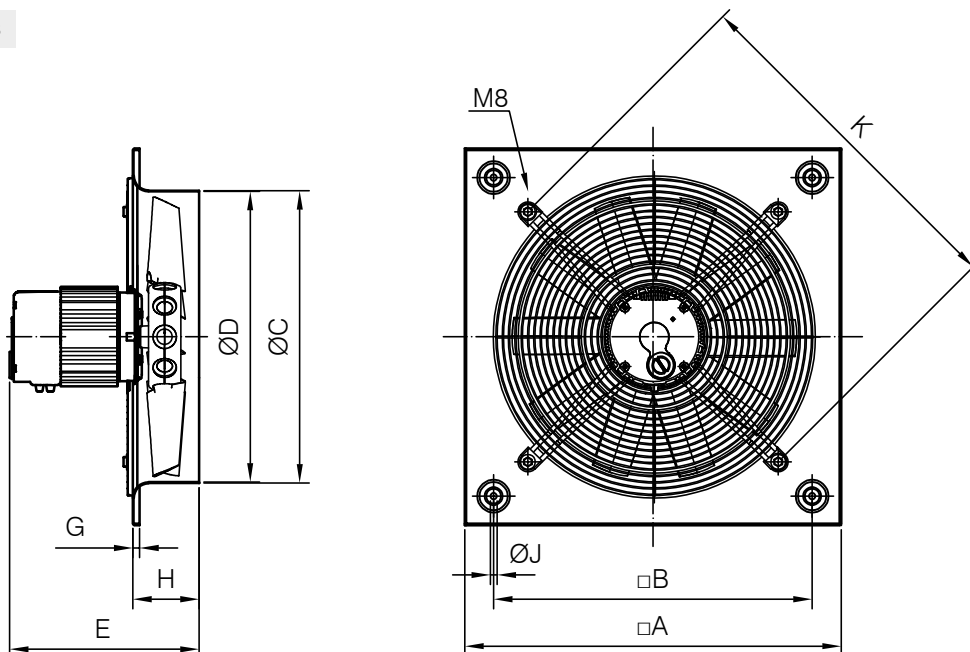
Sound power spectrum Lw(A) in dB(A) per Hz frequency band

Values measured at inlet with maximum flow rate

	63	125	250	500	1000	2000	4000	8000		63	125	250	500	1000	2000	4000	8000
HC/EC-45-4	33	50	63	70	75	76	71	64	HC/EC-80-4	60	81	88	93	96	92	85	74
HC/EC-50-4	36	53	66	73	78	79	74	67	HC/EC-90-4	64	85	92	97	100	96	89	78
HC/EC-56-4	39	56	69	76	81	82	77	70	HC/EC-90-6	54	75	82	87	90	86	79	68
HC/EC-63-4	43	60	73	80	85	86	81	74	HC/EC-100-4	68	88	96	101	103	100	93	82
HC/EC-71-4	47	64	77	84	89	90	85	78	HC/EC-100-6	58	78	86	91	93	90	83	72
HC/EC-71-6	35	52	65	72	77	78	73	66									

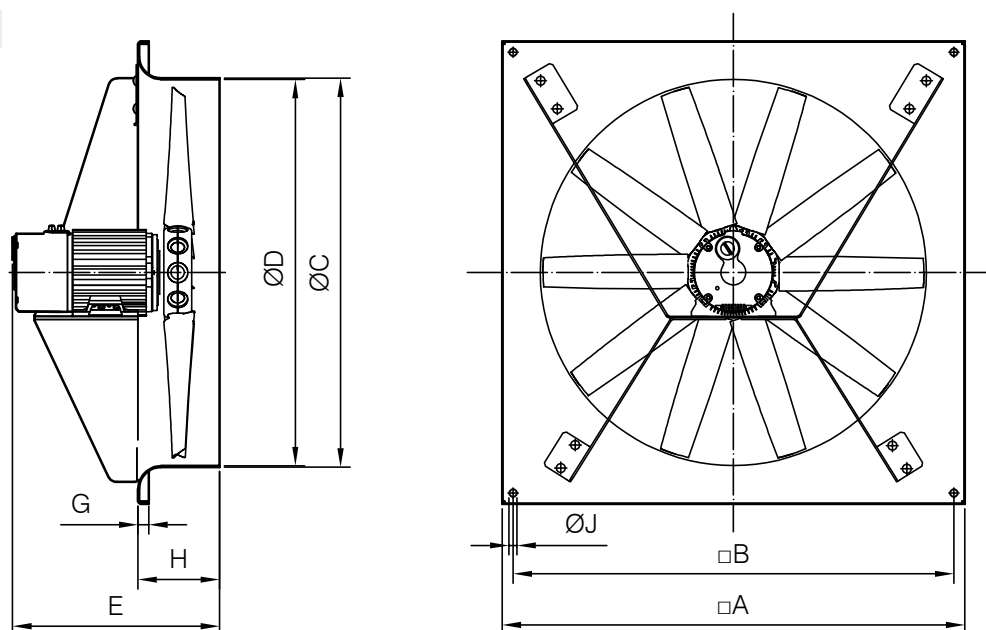
Dimensions mm

HC/EC-45...63



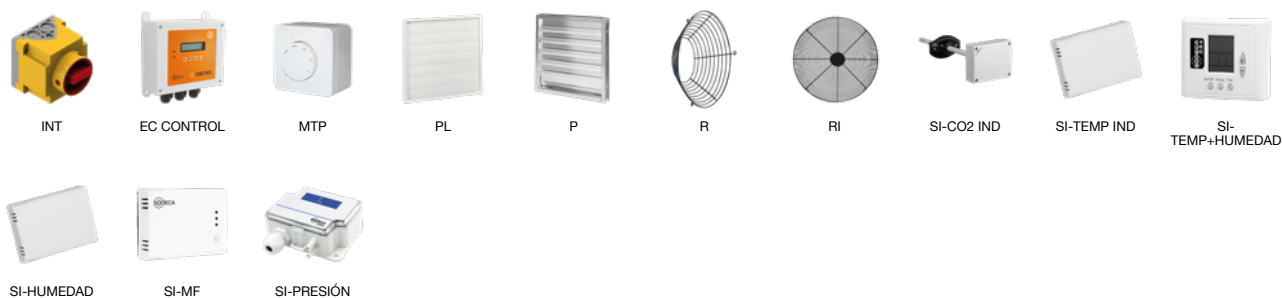
Dimensions mm

HC/EC-71...100



	A	B	ØC	ØD	E	G	H	ØJ	K
HC/EC-45-4M-0.5	596	504	462.5	460	329	11	105	10.5	560
HC/EC-45-4T-0.5	596	504	462.5	460	320	11	105	10.5	560
HC/EC-50-4M-0.75	665	562	517	514	351	11	105	10.5	640
HC/EC-50-4T-0.75	665	562	517	514	337	11	105	10.5	640
HC/EC-56-4M-1.5	710	630	563	560	382	15	115	10.5	721
HC/EC-56-4T-1.5	710	630	563	560	353	15	115	10.5	721
HC/EC-63-4M-1.5	800	710	638	635	407	15	140	10.5	820
HC/EC-63-4T-1.5	800	710	638	635	378	15	140	10.5	820
HC/EC-71-4T-2	850	810	714	710	371	20	150	14.5	-
HC/EC-71-6M-1.5	850	810	714	710	380	20	150	14.5	-
HC/EC-71-6T-1.5	850	810	714	710	351	20	150	14.5	-
HC/EC-80-4T-3	970	910	804	800	443	20	180	14.5	-
HC/EC-80-4T-4	970	910	804	800	458	20	180	14.5	-
HC/EC-90-4T-5.5	1170	1110	904	900	484	20	180	14.5	-
HC/EC-90-6T-3	1170	1110	904	900	442	20	180	14.5	-
HC/EC-100-4T-7.5	1170	1110	1004	1000	451	20	180	14.5	-
HC/EC-100-6T-3	1170	1110	1004	1000	442	20	180	14.5	-

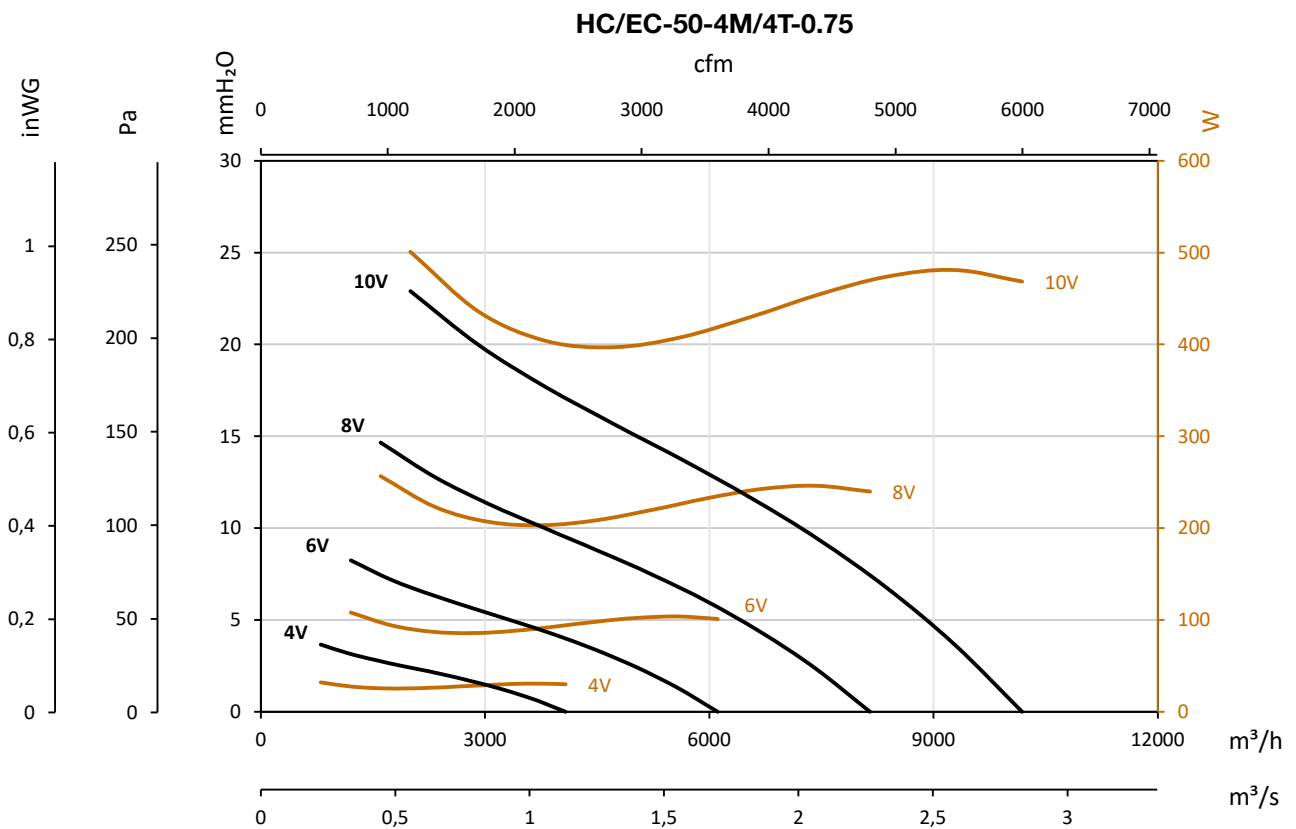
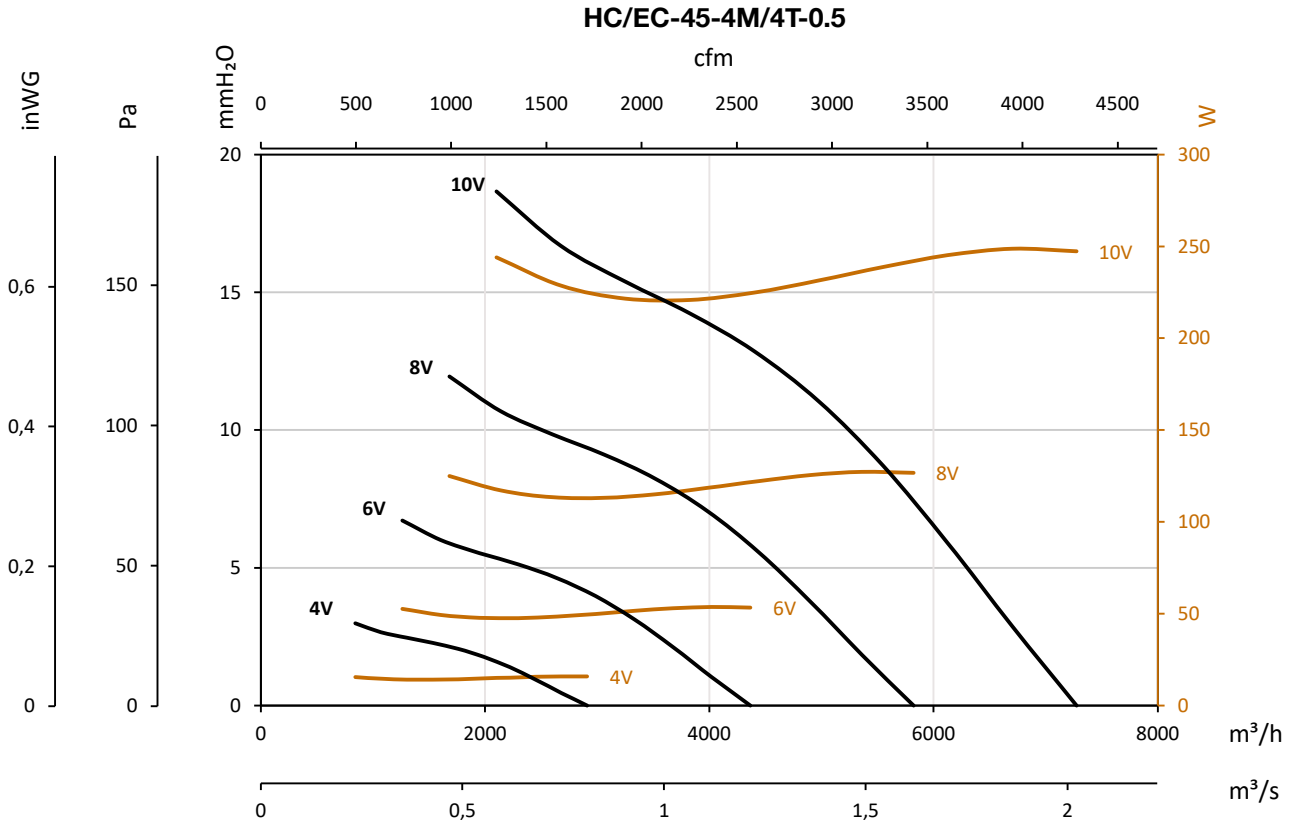
Accessories



Characteristic curves

Q= Flow rate in m³/h, m³/s and cfm

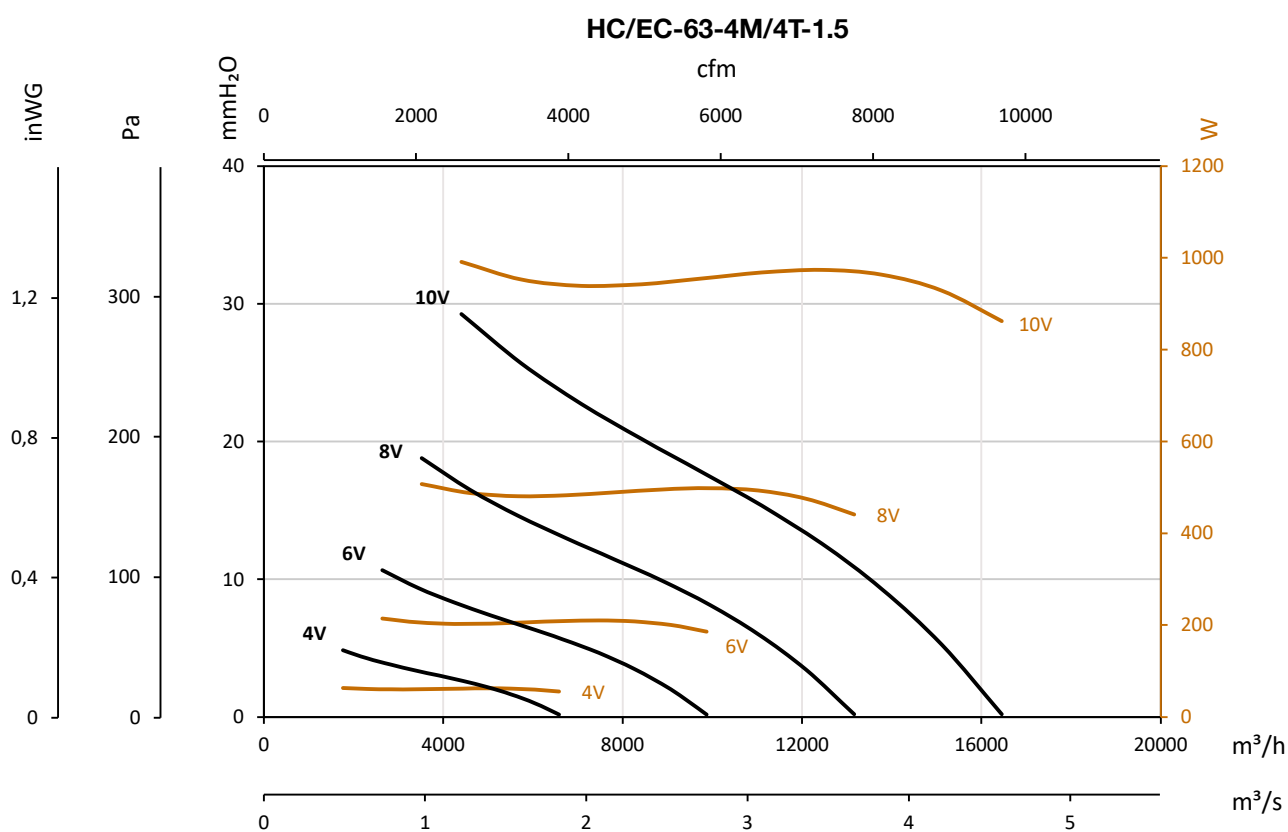
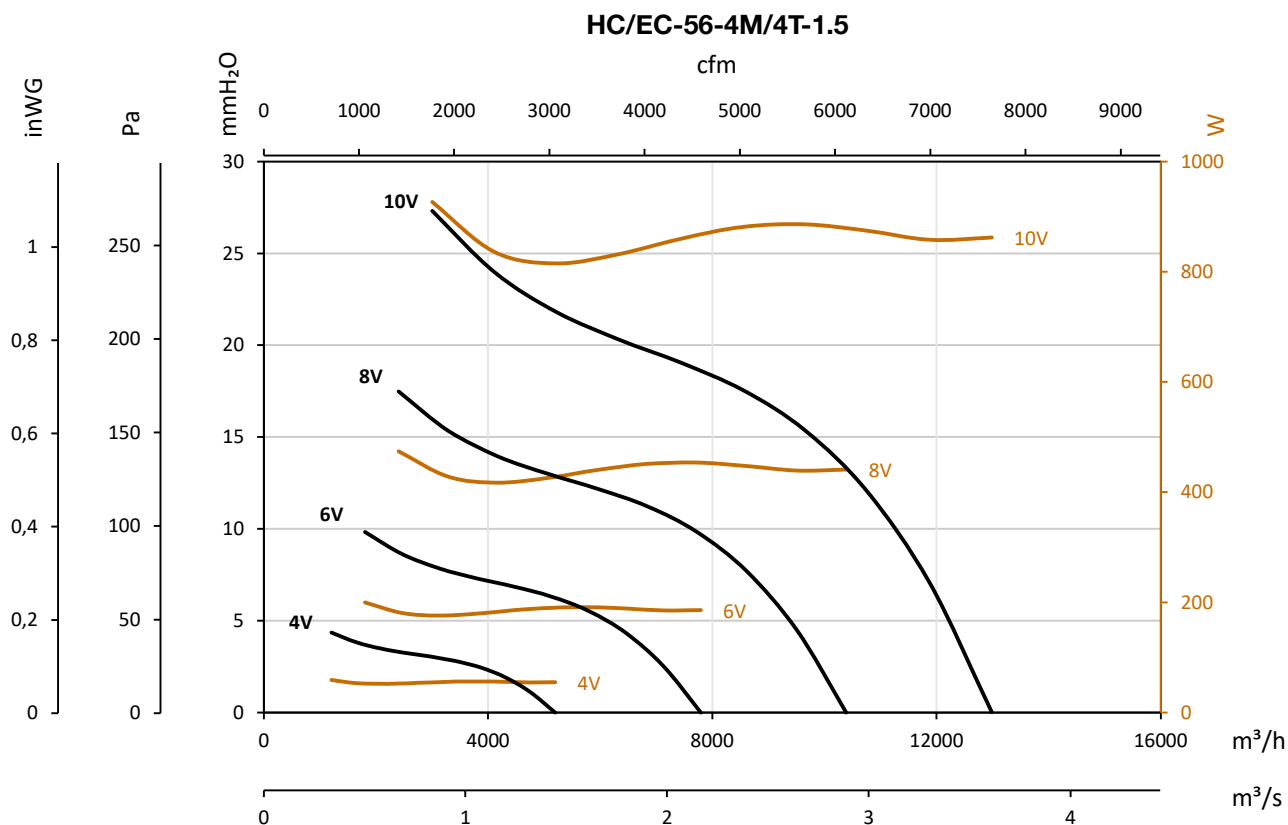
Pe= Static pressure in mm H₂O, Pa and inWG



Characteristic curves

Q= Flow rate in m³/h, m³/s and cfm

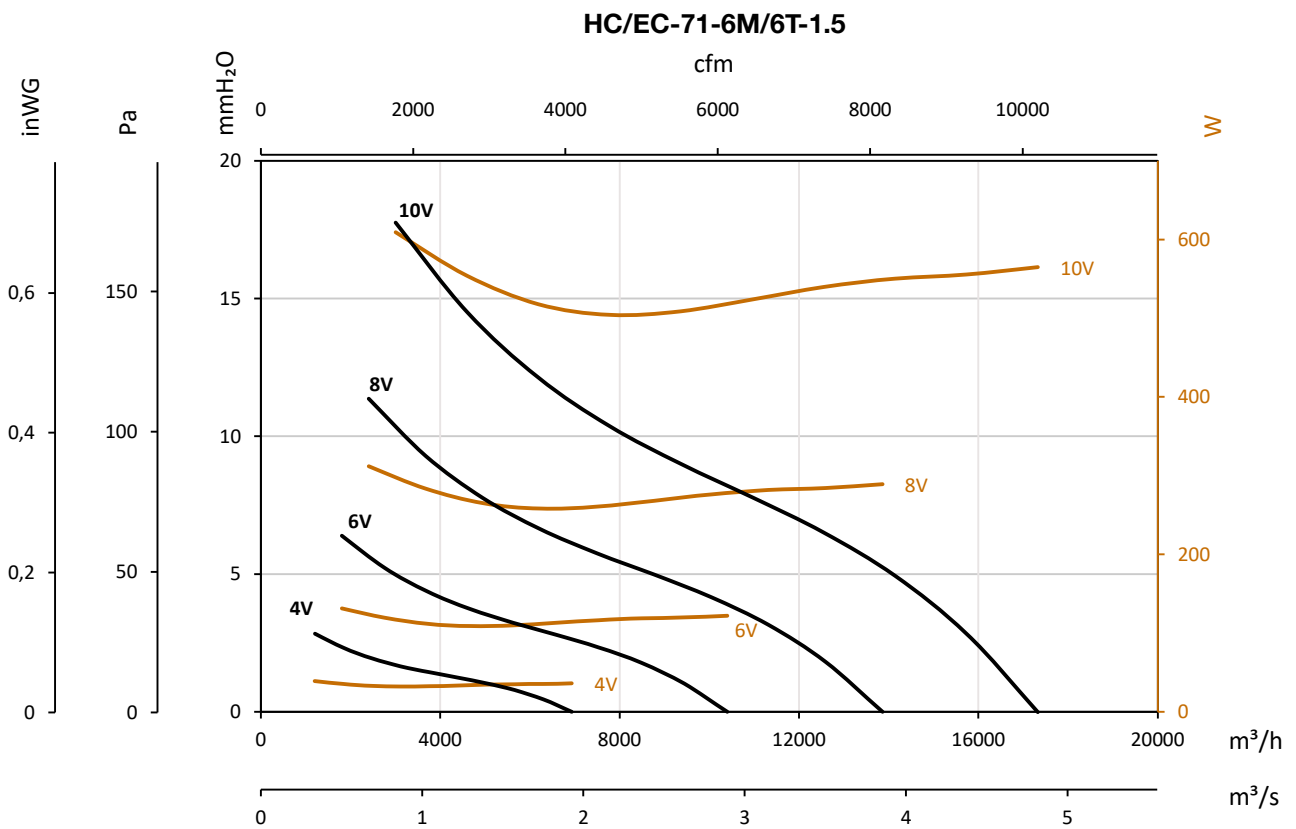
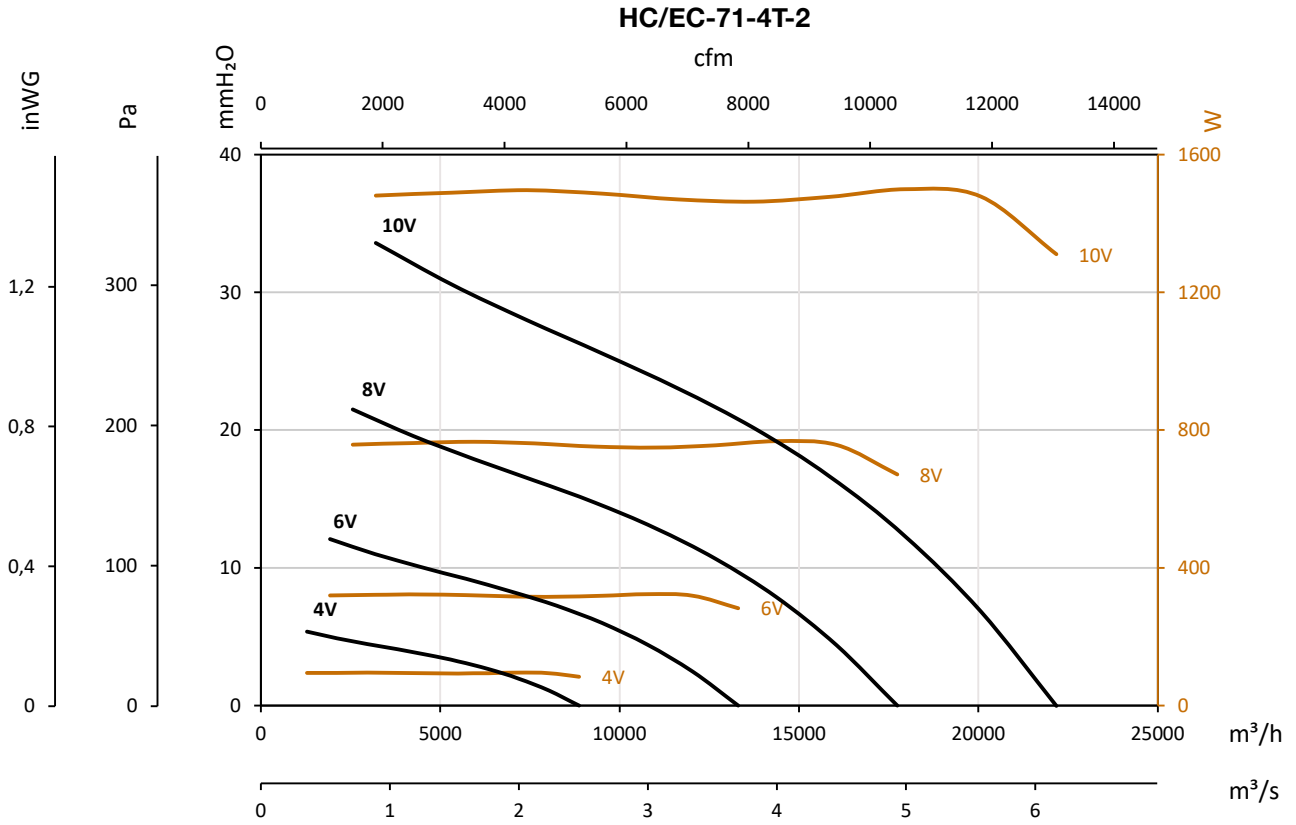
Pe= Static pressure in mm H₂O, Pa and inWG



Characteristic curves

Q= Flow rate in m³/h, m³/s and cfm

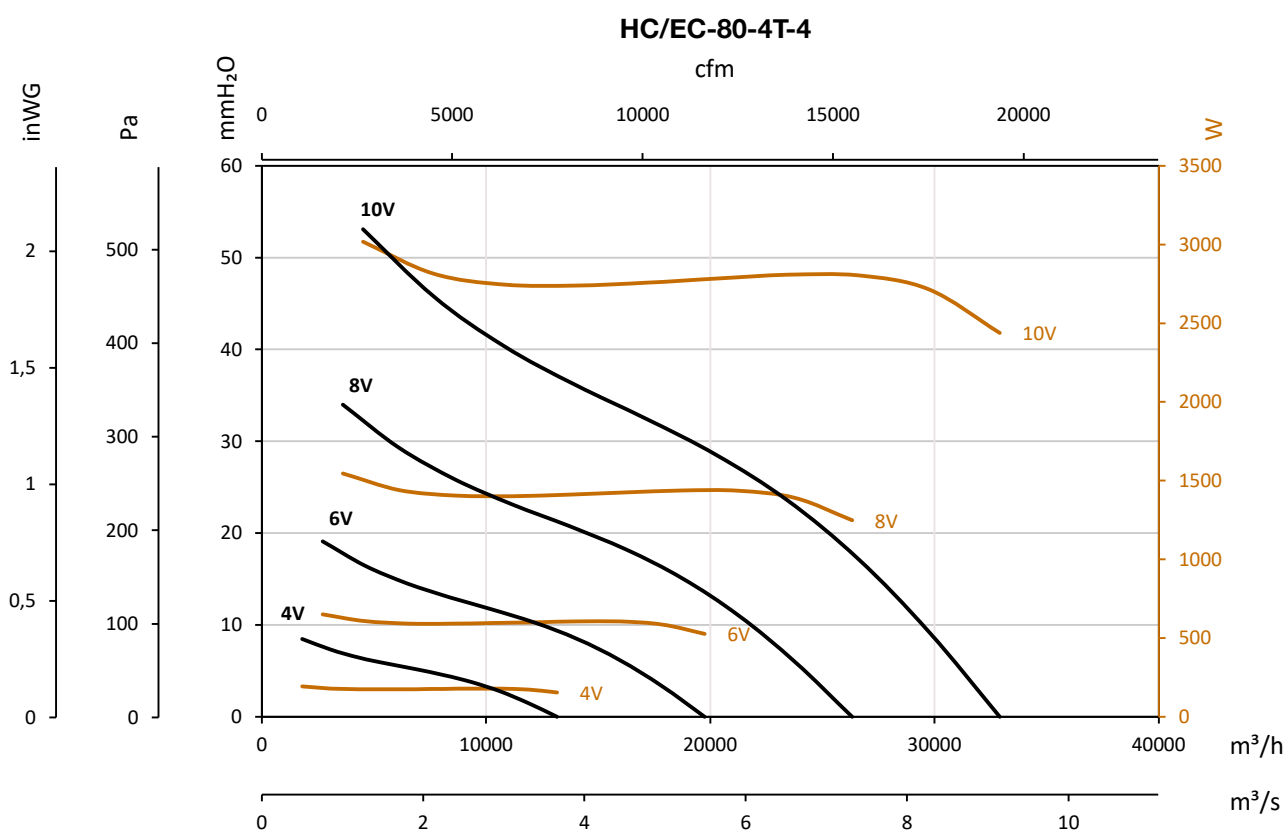
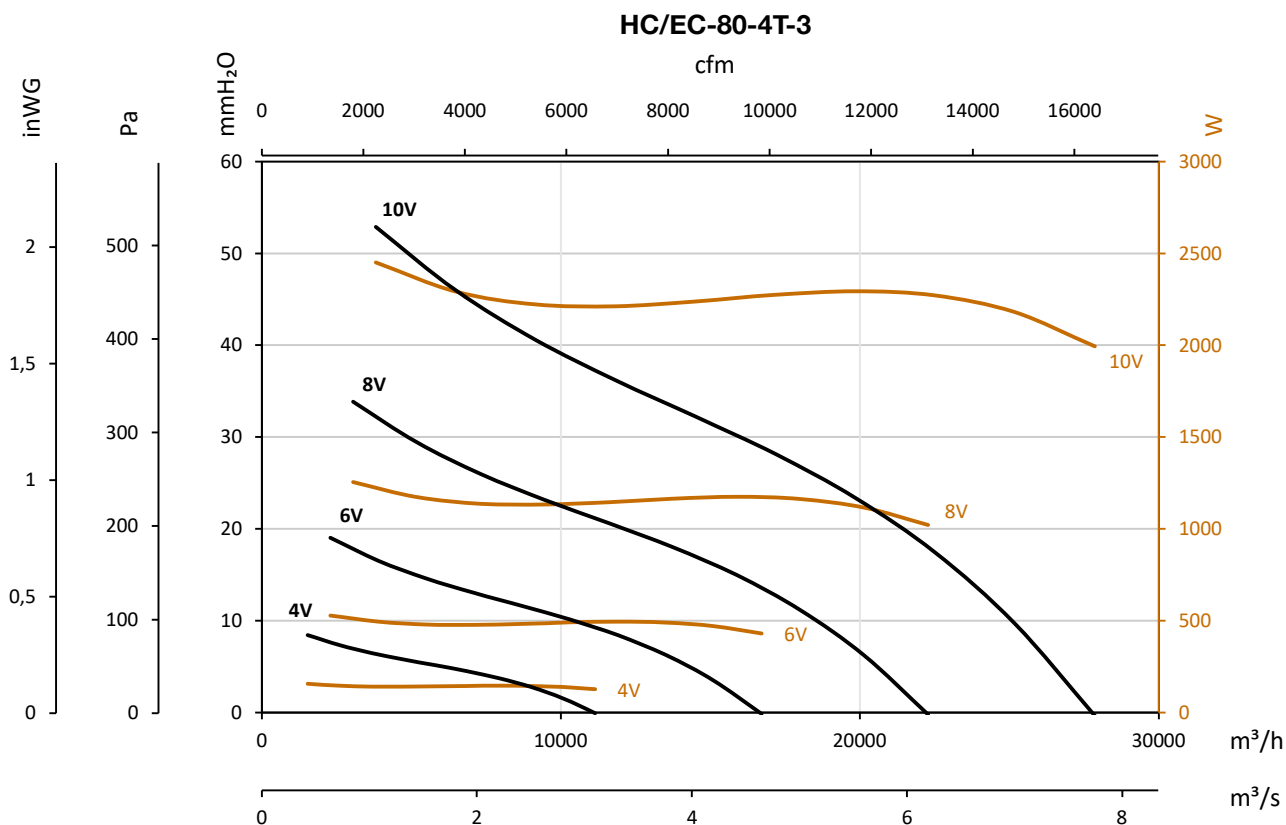
Pe= Static pressure in mm H₂O, Pa and inWG



Characteristic curves

Q= Flow rate in m³/h, m³/s and cfm

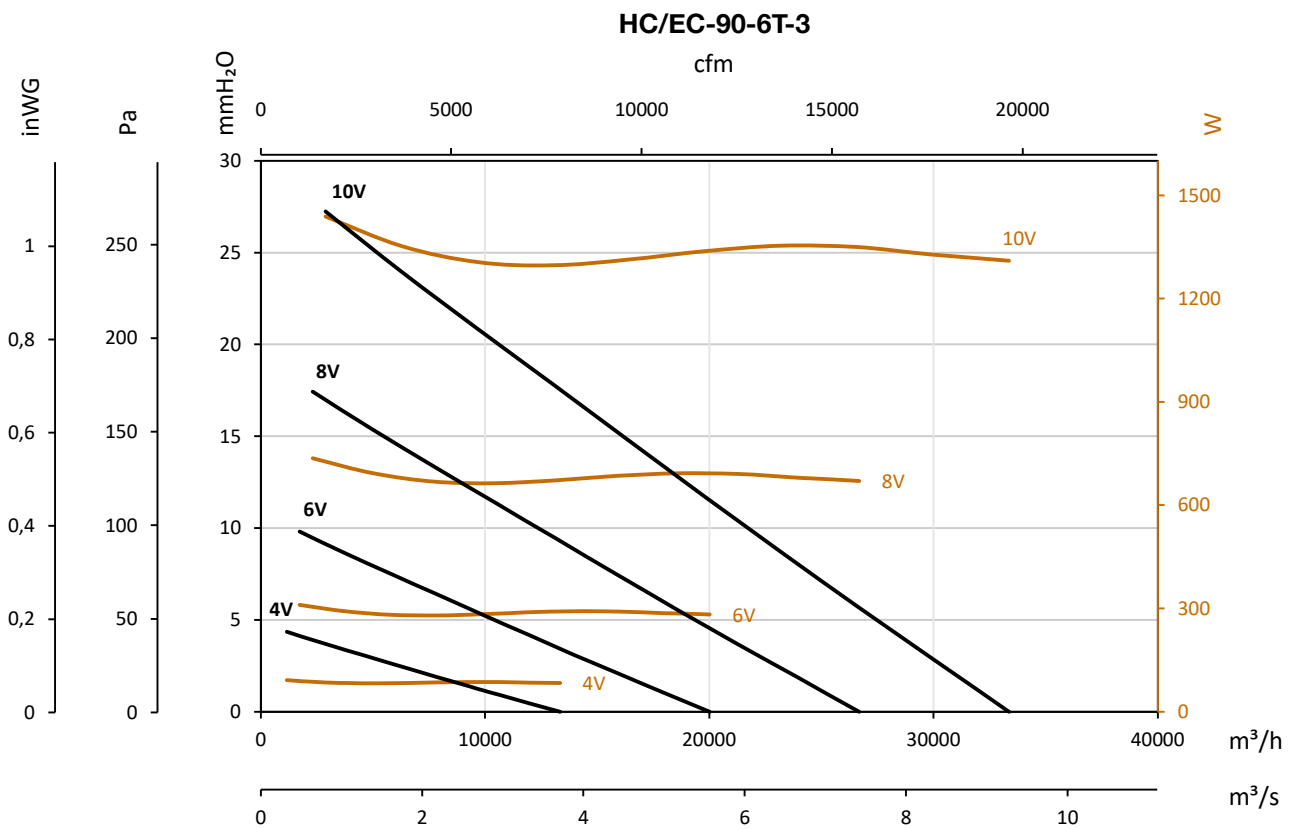
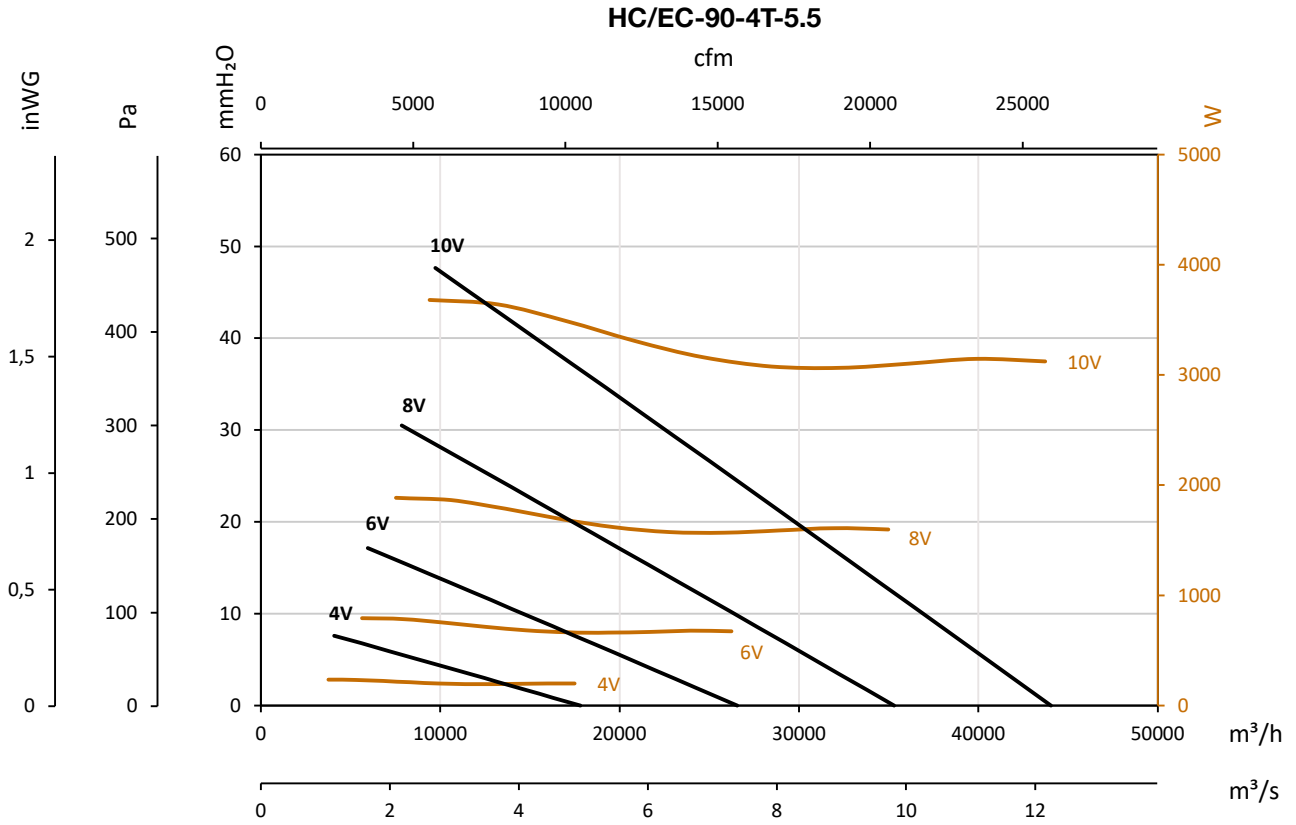
Pe= Static pressure in mm H₂O, Pa and inWG



Characteristic curves

Q= Flow rate in m³/h, m³/s and cfm

Pe= Static pressure in mm H₂O, Pa and inWG



Characteristic curves

Q= Flow rate in m³/h, m³/s and cfm

Pe= Static pressure in mm H₂O, Pa and inWG

