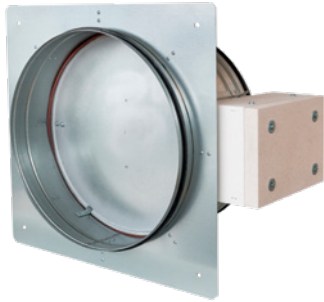


SCDRS-MA

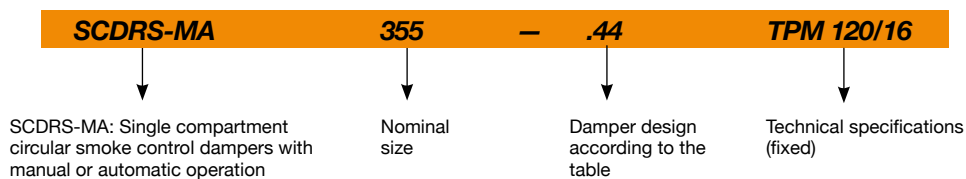
Single compartment circular smoke control dampers with manual or automatic operation



Characteristics:

- Circular damper from ø 100 to 630 mm.
 - CE-certified according to EN 12101-8.
 - Tested according to EN 1366-10.
 - Classified according to EN 13501-4+A1 as EIS 120/600, acting MA or AA in single compartment.
 - External enclosure leakage Class C, internal leakage Class 4.
 - Cycle test class Cmod according to EN 12101-8.
 - Damper actuation via 24 V or 230 V electric actuator.
- Recommended maximum speed 15 m/s, permissible pressure up to 500 Pa, or vacuum up to -1500 Pa.
 - Designed for systems with automatic or manual activation.
 - Working temperature: -30 °C +50 °C.

Order code



Damper design

Additional digit

With 230 V BEN actuator	.44
With 24 V BEN actuator	.54
With 24 V BEN-SR actuator	.65
With the communication and supply device BKNE 230-24 and actuating mechanism BEN-ST for 24 V	.66