

AIRHOME

Efficient ventilation equipment for homes with heat recovery units



AIRHOME-350/V



Efficient ventilation equipment for homes with heat recovery. Low power consumption, acoustic comfort and high thermal performance.

Characteristics:

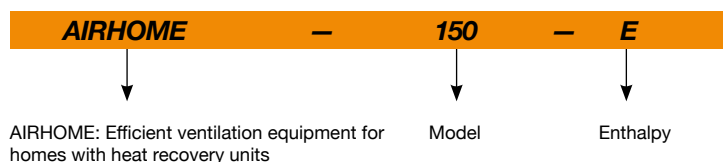
- Controlled mechanical ventilation system based on the extraction of stale air and the supply of fresh air.
- Counterflow sensible or enthalpy heat exchanger.
- With 100% automatic by-pass.
- Centrifugal fan with constant flow control.
- Easy to remove filters for cleaning and maintenance.
- Operation compatible 50/60 Hz.

- Built-in filters, quality F7.
- Interior in lightweight expanded polypropylene and with low noise emissions.
- Low profile models for false ceiling installation (AIRHOME-150 and AIRHOME-300).
- Control compatible with MODBUS RTU.
- Very low noise level.

On request:

- Other filter combinations.

Order code

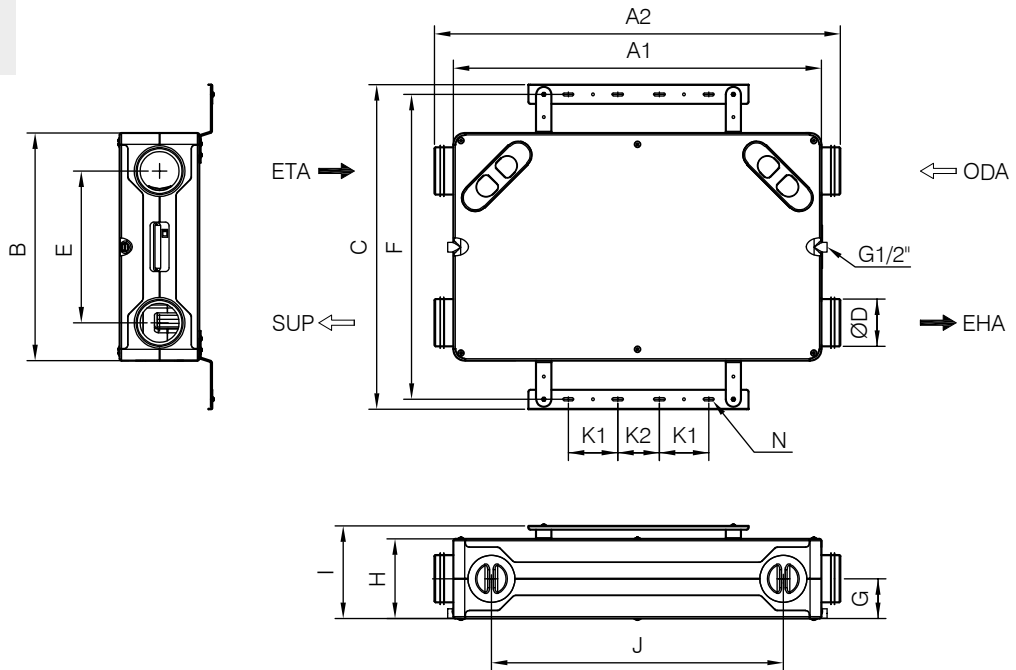


Technical characteristics

Characteristics	AIRHOME-150 AIRHOME-150/E	AIRHOME-300	AIRHOME-350/V
Flow rate @100Pa	150 m ³ /h	300 m ³ /h	350 m ³ /h
Thermal efficiency	EN 308 81.1 %	83.1 %	87.0 %
	UNE 13141-7 80.2 %	82.6 %	86.0 %
Constant flow regulation	YES	YES	YES
Irradiated sound pressure at maximum flow rate (1.5 m) dB (A)	26	36	38
Electrical power (W)	60	180	267
Installation	False ceilings/Wall	False ceilings/Wall	Wall
Interchangeable nozzles	YES	YES	YES
Nozzles diameter (mm)	125	160	160
Filters in external air supply	F7	F7	F7
Remote control	Included	Included	Included
Compatible with MODBUS RTU	YES	YES	YES
Sensors in extraction of stale air	T°, RH, VOC, CO2	T°, RH, VOC, CO2	T°, RH
Dimensions mm	970 x 600 x 210	1170 x 820 x 270	480 x 595 x 905
Approx. weight (Kg)	23	36	40

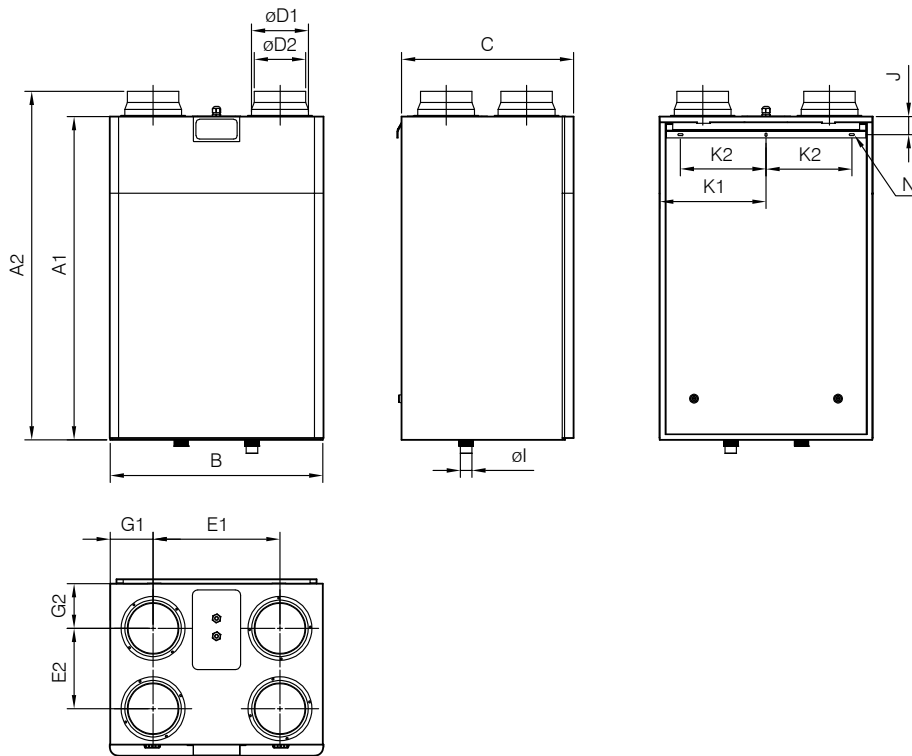
Dimensions mm

**AIRHOME-150
AIRHOME-150-E
AIRHOME-300**



	A1	A2	B	C	D	E	F	G	H	I	J	K1	K2	N
AIRHOME-150	970	1070	600	855	125	400	803.5	105	210	244	770	130	110	8x30
AIRHOME-150/E	970	1070	600	855	125	400	803.5	105	210	244	770	130	110	8x30
AIRHOME-300	1140	1270	820	1072	160	510	1020	135	270	304	830	130	110	8x30

AIRHOME-350/V



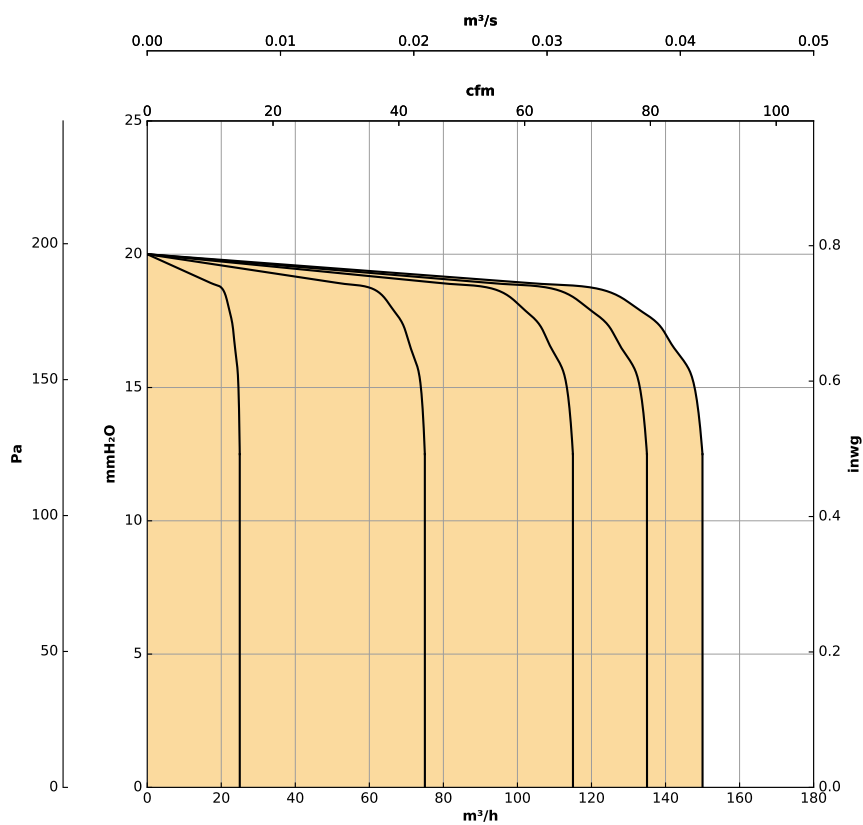
	A1	A2	B	C	D1	D2	E1	E2	G1	G2	I	J	K1	K2	N
AIRHOME-350/V	905	975	595	480	160	144	350	220	122.5	125.5	32	57	297	240	5.2x10

Characteristic curves

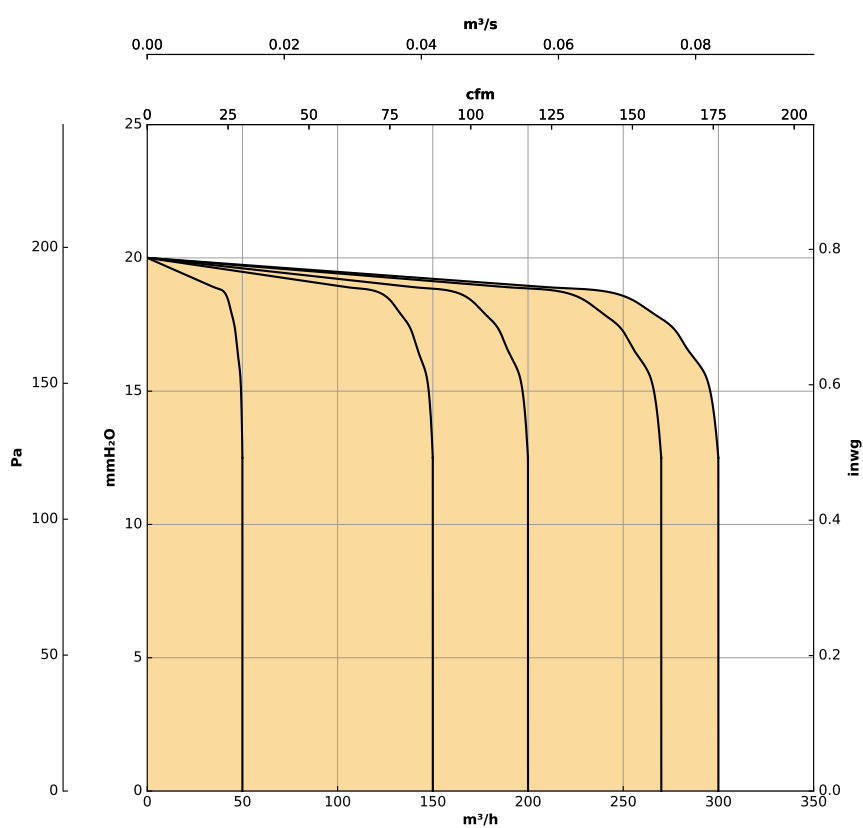
Q= Flow rate in m³/h, m³/s and cfm

Pe= Static pressure in mm H₂O, Pa and inwg

**AIRHOME-150
AIRHOME-150-E**



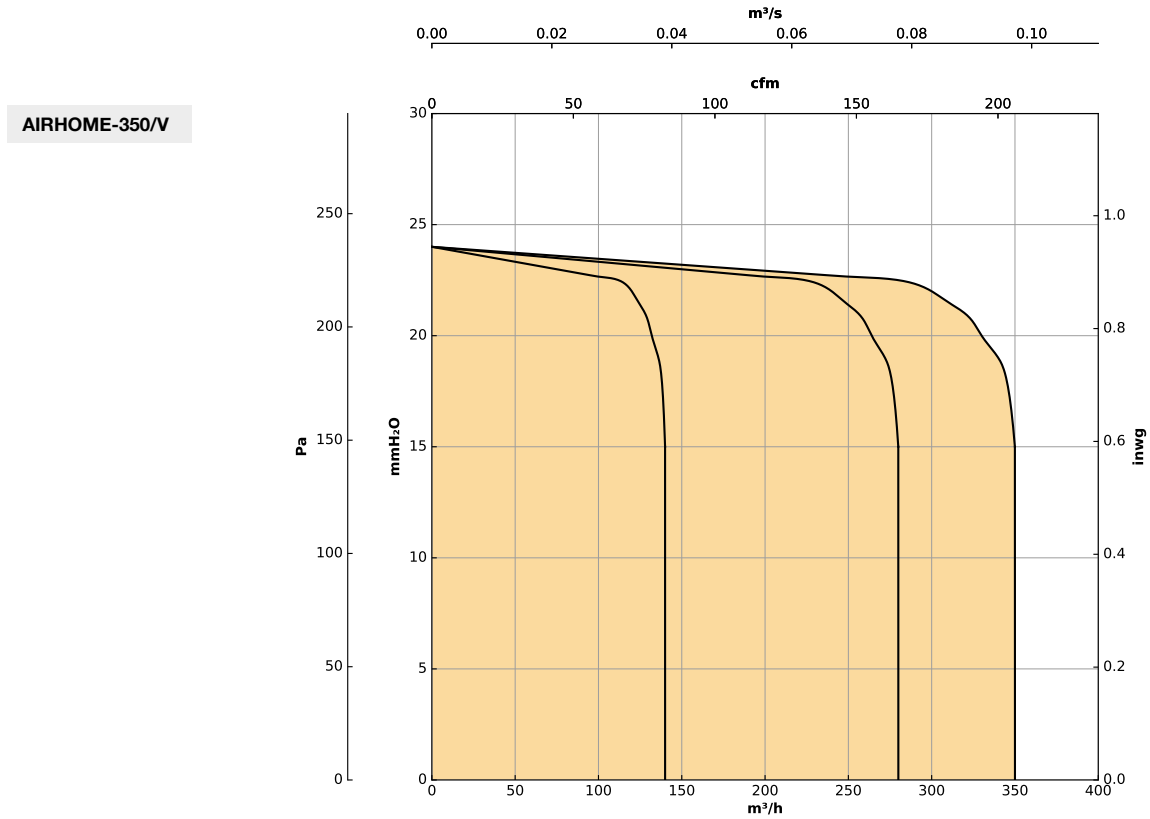
AIRHOME-300



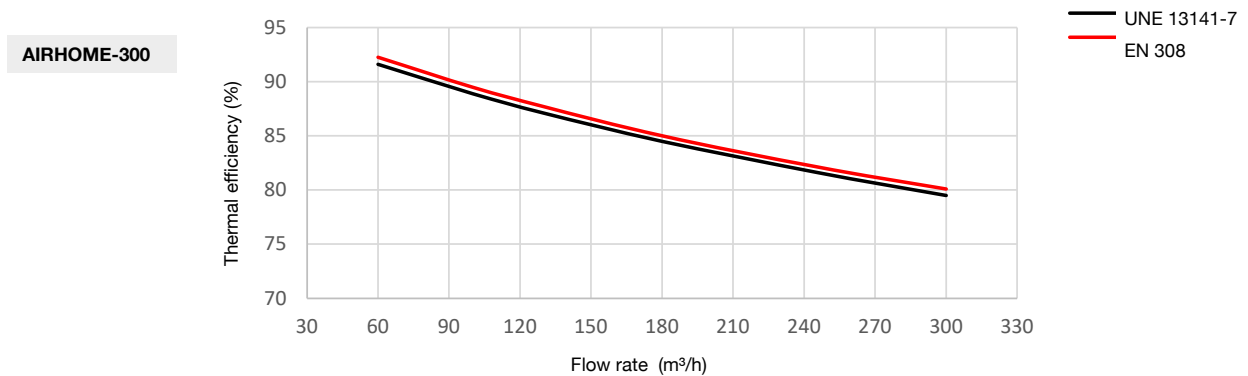
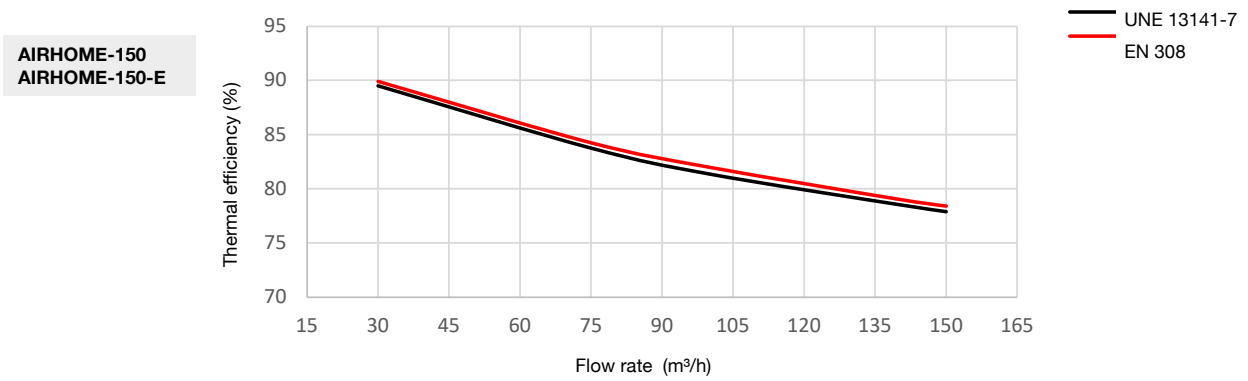
Characteristic curves

Q= Flow rate in m³/h, m³/s and cfm

Pe= Static pressure in mm H₂O, Pa and inwg

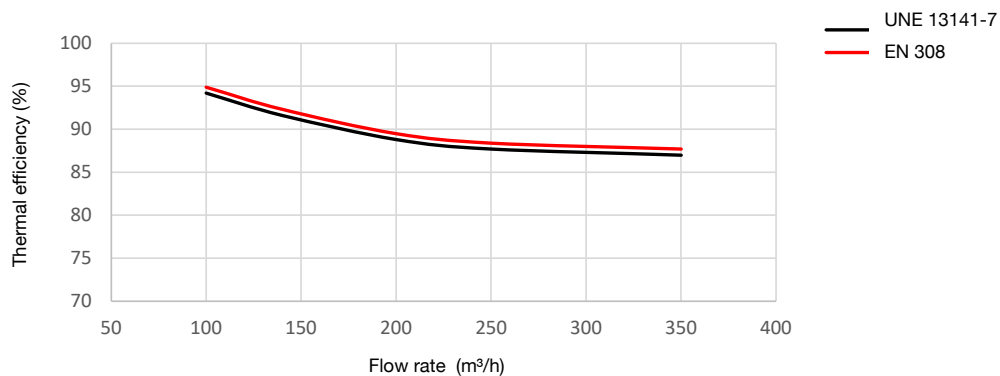


Efficiency curves



Efficiency curves

AIRHOME-350/V



Accessories



FILTROS



BE-AC



BI-AC



VMC-RC



VMC-PL



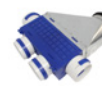
VMC-EXT



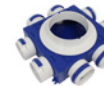
VMC-CSR



VMC-ME



VMC-CLP



VMC-CCP



VMC-BL



VMC-ADR



VMC-ADK



VMC-ADL



VMC-AN



VMC-R



VMC-JG



VMC-CUTTER



VMC-PLNC



VMC-TPN



VMC-MGT