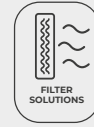


CJFILTER/REC



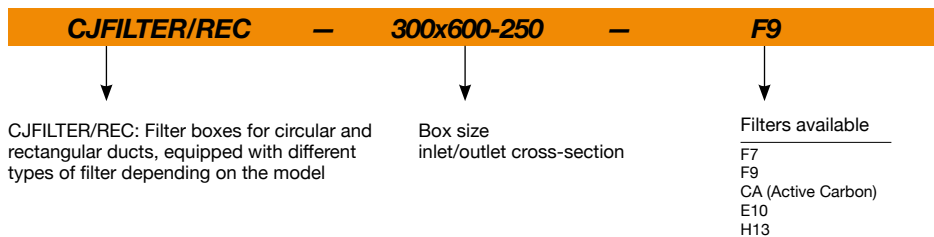
Filter boxes for circular and rectangular ducts, equipped with different types of filter depending on the model



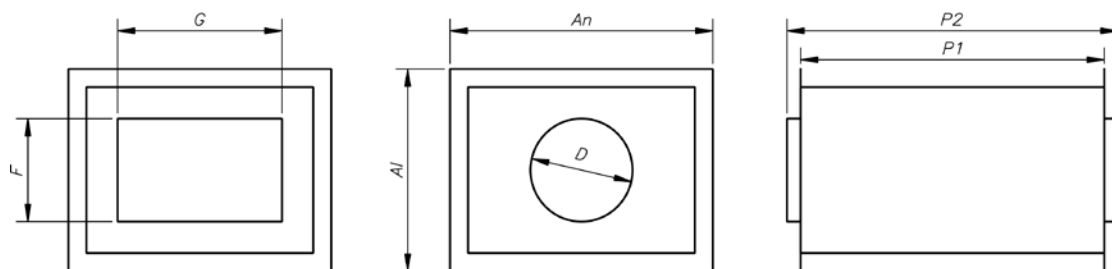
Main characteristics:

- Side maintenance access panel.
- Easy to install.
- Filters can easily and quickly be replaced using guides.
- 5 mm thick acoustic insulation.
- Low profile models for false ceiling installation.
- Compact F7 and F9 efficiency filters for 98 mm rail mounting.
- 292 mm deep polyhedral E10, H13 and CA (active carbon) efficiency filters for mounting on 25 mm rail.

Order code



Dimensions mm

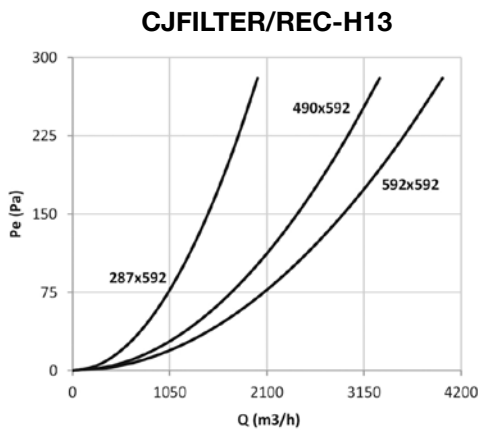
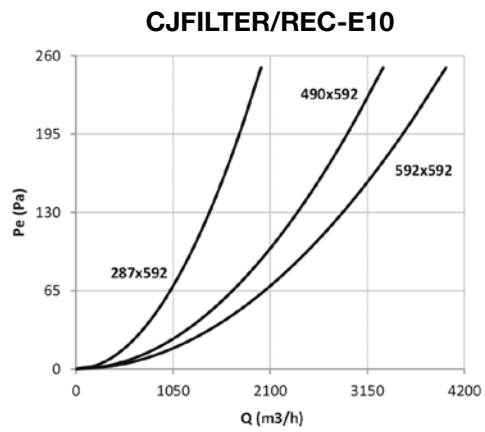
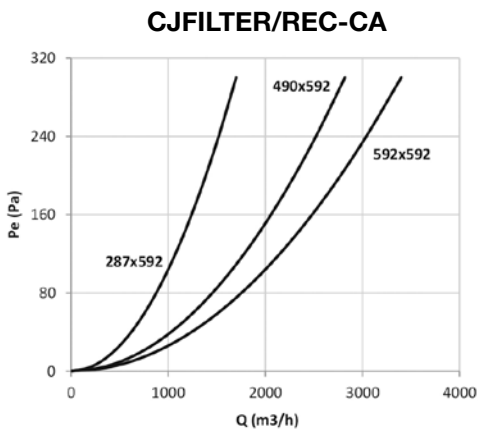
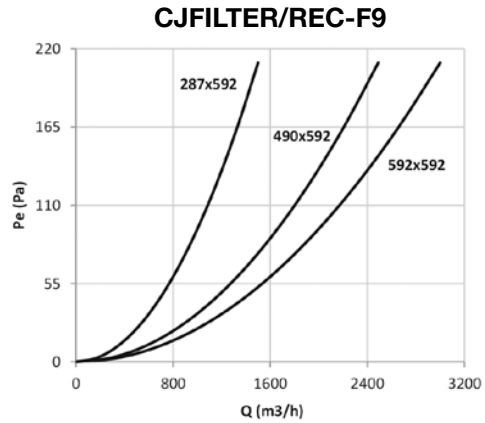
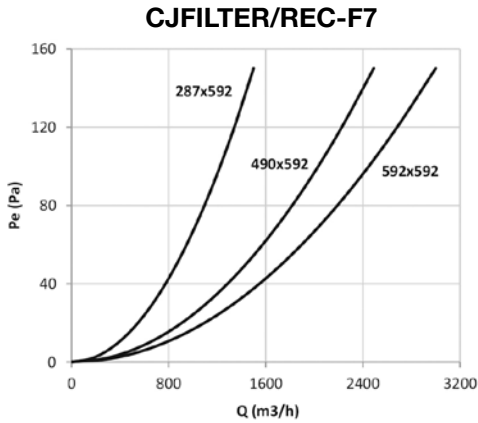


	Al	An	P1	P2	F	G	D
CJFILTER/REC-300x600-150	370	640	450	530	-	-	150
CJFILTER/REC-300x600-160	370	640	450	530	-	-	160
CJFILTER/REC-300x600-200	370	640	450	530	-	-	200
CJFILTER/REC-300x600-250	370	640	450	530	-	-	250
CJFILTER/REC-300x600-250x500	370	640	450	530	250	500	-
CJFILTER/REC-500x700-250x500	570	740	450	530	250	500	-
CJFILTER/REC-500x700-300x700	570	740	450	530	300	700	-
CJFILTER/REC-500x700-315	570	740	450	530	-	-	315
CJFILTER/REC-500x700-355	570	740	450	530	-	-	355
CJFILTER/REC-500x700-400x700	570	740	450	530	400	700	-

	Al	An	P1	P2	F	G	D
CJFILTER/REC-600x1200-450	670	1240	450	530	-	-	450
CJFILTER/REC-600x1200-500x800	670	1240	450	530	500	800	-
CJFILTER/REC-600x600-315	670	640	450	530	-	-	315
CJFILTER/REC-600x600-400	670	640	450	530	-	-	400
CJFILTER/REC-600x900-315	670	940	450	530	-	-	315
CJFILTER/REC-600x900-350x600	670	940	450	530	350	600	-
CJFILTER/REC-600x900-355	670	940	450	530	-	-	355
CJFILTER/REC-600x900-400x700	670	940	450	530	400	700	-
CJFILTER/REC-600x900-450	670	940	450	530	-	-	450
CJFILTER/REC-600x900-500x800	670	940	450	530	500	800	-

Load loss characteristic curves

Q= Flow rate in m³/h, m³/s and cfm Pe= Static pressure in mm H₂O, Pa and inwg



Codes of available filters and filter combinations according to box sizes

BOX SIZE (Height x Width)	N° OF FILTERS ACCORDING TO BOX SIZE FILTER SIZE			FILTER CODE ACCORDING TO SIZE AND EFFICIENCY					
	287x592	490x592	592x592	FILTER SIZE	F7	F9	CA	E10	H13
300x600	1	-	-	287x592	1104804	1104833	1082526	1104852	1104857
500x700	-	1	-	490x592	1104832	1104846	1104849	1104855	1104858
600x600	-	-	1	592x592	1082426	1104847	1082525	1104856	1104859
900x600	1	-	1						
1200x600	-	-	2						