

SOLUTIONS FOR SMOKE EXHAUST IN REFRIGERATED ROOMS

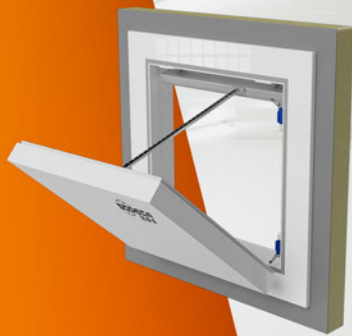
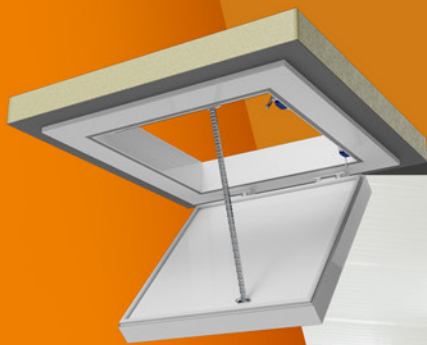
HIGH PERFORMANCE IN
TERMS OF WATER-TIGHTNESS
AND INSULATION

SUITABLE FOR
TEMPERATURES
UP TO -28°C

OPERATIONAL
RELIABILITY EXCEEDING
11,000 CYCLES

Certified in accordance with EN 12101-3

Tested with hatch and extract fan for smoke exhaust
in accordance with test 21/32306-460



IN ACCORDANCE WITH
STANDARD EN 12101-3

EXTRACT FANS FOR SMOKE
EXHAUST AND MOTORISED HATCHES

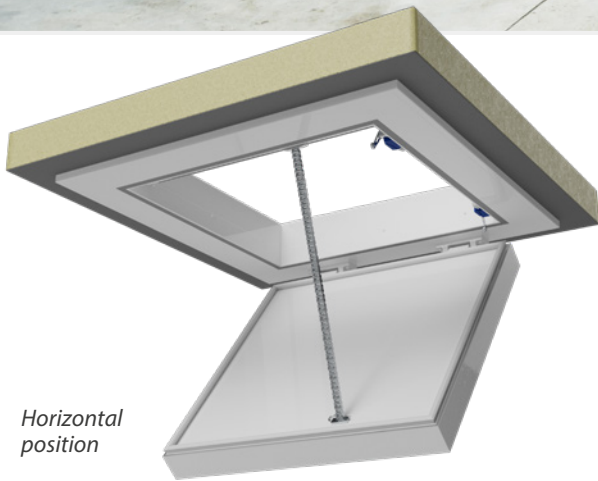


FRIDGE/FLAP

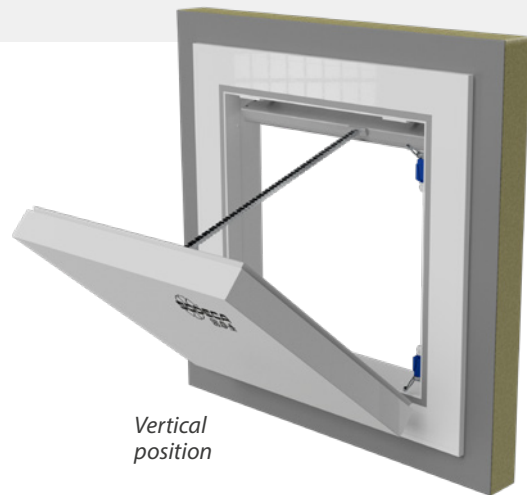
Motorised hatches **certified** for installations with smoke exhaust extract fans in **refrigerated rooms**



IN ACCORDANCE WITH STANDARD EN 12101-3



Horizontal position



Vertical position

Certified in accordance with EN 12101-3

Tested with hatch and extract fan for smoke exhaust in accordance with test 21/32306-460

11,000
CYCLES

RELIABILITY

Chain actuator with an operational reliability exceeding 11,000 cycles with a 30 second open and close time.



OPENING

Motorised opening with a manual opening system in case of a malfunction (Utility model ES 1 259 375 U).



INDICATIONS

Limit switches with voltage free contacts for monitoring whether the hatch is open or closed.



INSULATION

The mobile sheet is manufactured in lacquered sheet steel with expanded and press injected polyurethane, class B in accordance with UNE-EN 13501, with a total insulation thickness of 90 mm.

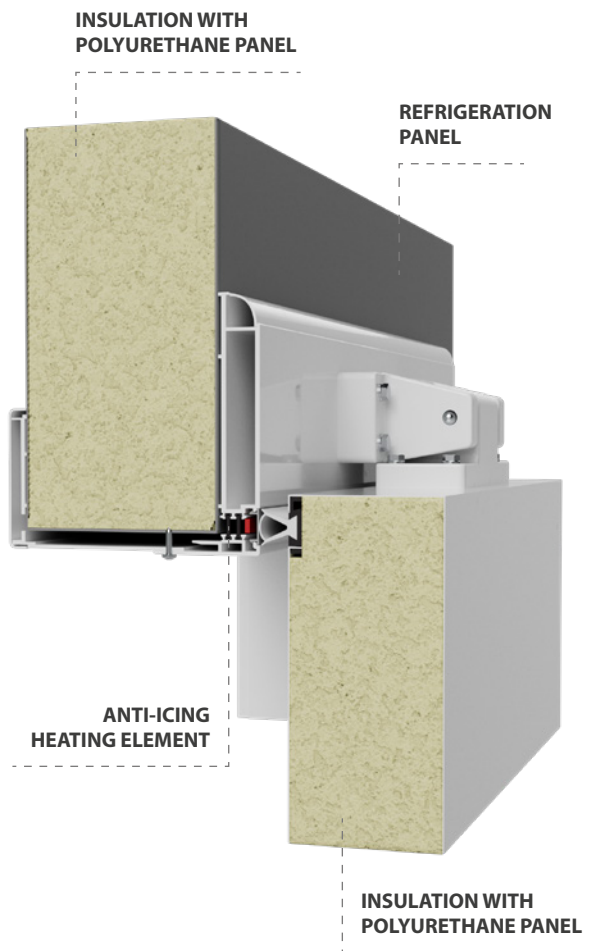
The perimeter profiles of the mobile sheet as well as the fixed frame are made of aluminium and are equipped with a thermal bridge break.

This way, thermal transmittance is reduced to 0.2 W/m²·K.



Certified in accordance with EN 12101-3

Tested with hatch and
extract fan for smoke
exhaust in accordance with
test 21/32306-460



WATER-TIGHTNESS

The dual air chamber perimeter seal provides a Class D water-tightness in accordance with EN 12207.



ANTI-ICING

To prevent icing of the water-tight seal and a subsequent blocking of the hatch, the frame is equipped with a 40 W/m perimeter heating element to prevent ice from building up.



INSTALLATION

Suitable for cold rooms (>4 °C) and freezing rooms (between 4 °C and -28 °C).



**Certified extract fans
in accordance with EN 12101-3**



APPLICATIONS FOR SMOKE EXHAUST IN **REFRIGERATION ROOMS**

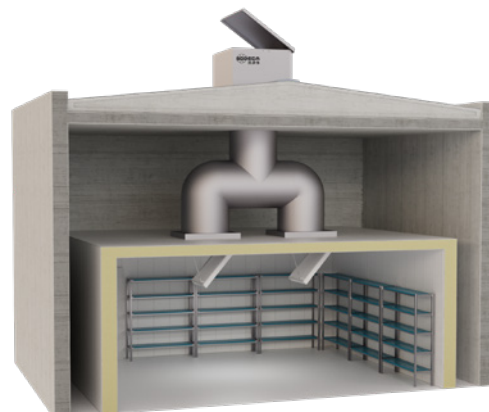
When doing the math regarding smoke extract fans, a high number of exhaust points but an exhaust flow achievable by a single extract fan are usually required. **This way, the cost of the extract system is reduced by adjusting the number of extract fans and extraction points.**



SMOKE EXHAUST
DRIVEN
FROM THE REFRIGERATION ROOM

With roof mounted extract fan with a high thermal insulation THT/HATCH

Installations with an outer roof requiring a high thermal insulation of the smoke extract fan. Using this combination we are able to achieve a full sealing against rainwater and an optimal thermal insulation, and it also enables routing the smoke from one or more exhaust points.

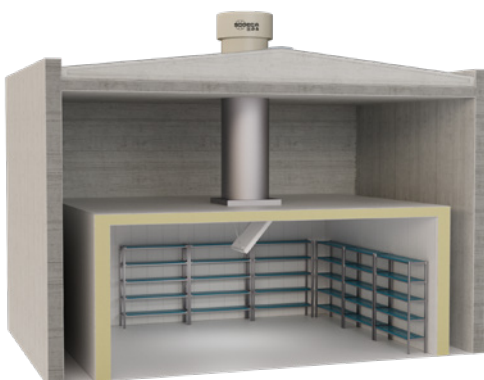




SMOKE EXHAUST
DRIVEN
 FROM THE REFRIGERATION ROOM

**Roof mounted extract fan
 with vertical exhaust THT/ROOF**

Installations with an outer roof and not requiring a high thermal insulation of the smoke extract fan. Using this combination we are able to achieve a full sealing against rainwater and it also enables routing the smoke from one or more exhaust points.



SMOKE EXHAUST
VIA PLENUM

**With roof mounted extract fan
 with horizontal HTMF exhaust**

Installations with an outer roof and not requiring a high thermal insulation of the smoke extract fan. Using this combination we are able to achieve a full sealing against rainwater and the room or plenum smoke exhaust are compatible.





**Certified extract fans
in accordance with EN 12101-3**



APPLICATIONS FOR SMOKE EXHAUST IN **REFRIGERATION ROOMS**

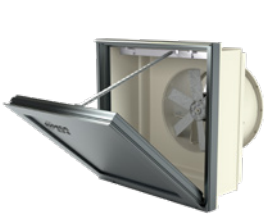


DIRECT
SMOKE EXHAUST
FROM THE REFRIGERATION ROOM

**With roof mounted extract fan with a
high thermal insulation THT/HATCH**

Installations where the refrigeration room is not equipped with an exterior roof; in this case, the smoke exhaust fan can be installed directly to the extract point. Using this combination we are able to achieve a full sealing against rainwater as well as an optimum thermal insulation.

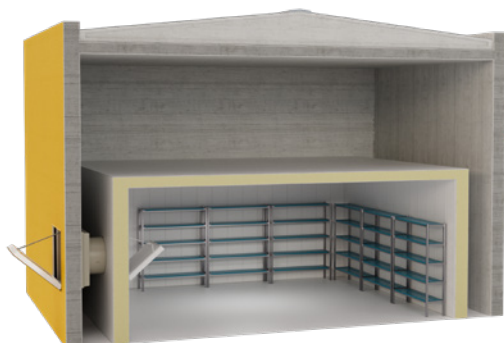




SMOKE EXHAUST
DRIVEN
 FROM THE REFRIGERATION ROOM

With wall mounted extract fan with a high thermal insulation THT/WALL

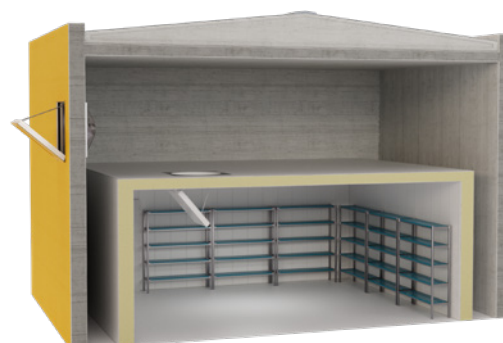
Installations where it is preferred that the smoke be exhausted through a building wall and where a high thermal insulation of the exterior enclosure is required. Using this combination we are able to achieve an optimal thermal insulation and it also enables routing the smoke from one or more exhaust points.



SMOKE EXHAUST
VIA PLENUM

With wall mounted extract fan with a high thermal insulation THT/WALL-F

Installations where it is preferred that the smoke be exhausted through a building wall and where a high thermal insulation of the exterior enclosure is required. Using this combination we are able to achieve an optimal thermal insulation and the room or plenum smoke exhaust are compatible.



**HEADQUARTERS****Sodeca, S.L.U.**

Pol. Ind. La Barricona
Carrer del Metall, 2
E-17500 Ripoll
Girona, SPAIN
Tel. +34 93 852 91 11
Fax +34 93 852 90 42
General sales: comercial@sodeca.com
Export sales: ventilation@sodeca.com

PRODUCTION PLANT**Sodeca, S.L.U.**

Ctra. de Berga, km 0,7
E-08580 Sant Quirze de Besora
Barcelona, SPAIN
Tel. +34 93 852 91 11
Fax +34 93 852 90 42
General sales: comercial@sodeca.com
Export sales: ventilation@sodeca.com

**EUROPE****FINLAND****Sodeca Finland, Oy**

HUITTINEN
Sales and Warehouse
Mr. Kai Yli-Sipilä
Metsälinnankatu 26
FI-32700 Huittinen
Tel. + 358 400 320 125
orders.finland@sodeca.com

HELSINKI
Smoke Control Solutions
Mr. Antti Kontkanen
Vilppulantie 9C
FI-00700 Helsinki
Tel. +358 400 237 434
akontkanen@sodeca.com

HYVINKÄÄ
Industrial Applications
Mr. Jaakko Tomperi
Niinistökatu 12
FI-05800 Hyvinkää
Tel. +358 451 651 333
jtomperi@sodeca.com

ITALIA**Marelli Ventilazione, S.R.L.**

Viale del Lavoro, 28
37036 San Martino B.A.
(VR), ITALY
Tel. +39 045 87 80 140
vendite@sodeca.com

PORTUGAL**Sodeca Portugal, Unip. Lda.**

PORTO
Rua Veloso Salgado
1120/1138
4450-801 Leça de Palmeira
Tel. +351 229 991 100
geral@sodeca.pt

LISBOA
Pq. Emp. da Granja Pav. 29
2625-607 Vialonga
Tel. +351 219 748 491
geral@sodeca.pt

ALGARVE
Rua da Alegria, 33
8200-569 Ferreiras
Tel. +351 289 092 586
geral@sodeca.pt

UNITED KINGDOM**Sodeca Fans UK, Ltd.**

Mr. Mark Newcombe
Tamworth Enterprise Centre
Philip Dix House, Corporation
Street, Tamworth, B79 7DN
UNITED KINGDOM
Tel. +44 (0) 1827 216 109
sales@sodeca.co.uk

AMERICA**CHILE****Sodeca Ventiladores, SpA.**

Sra. Sofia Ormazábal
Santa Bernardita 12.005
(Esquina con Puerta Sur)
Bodegas 24 a 26,
San Bernardo, Santiago, CHILE
Tel. +56 22 840 5582
ventas.chile@sodeca.com

COLOMBIA**Sodeca Latam, S.A.S.**

Sra. Luisa Stella Prieto
Calle7 No. 13 A-44
Manzana 4 Lote1, Montana
Mosquera, Cundinamarca
Bogotá, COLOMBIA
Tel. +57 1 756 4213
ventascolombia@sodeca.co

PERU**Sodeca Perú, S.A.C.**

Sr. Jose Luis Jiménez
C/ Mariscal Jose Luis de
Orbegoso 331. Urb. El pino.
15022, San Luis. Lima, PERÚ
Tel. +51 1 326 24 24
Cel. +51 994671594
comercial@sodeca.pe



www.sodeca.com

