

# CBX



**Belt driven centrifugal fans with double inlet, with shaft output on both sides and with a forward curved impeller**



**Fan:**

- Galvanised steel sheet casing.
- Forward curved impeller in galvanised sheet steel.
- Bearings supported with rubber dampers to avoid vibrations.
- Supplied with PSB support feet.
- Free shaft with permanently greased ball bearings on both sides.
- Temperature of the air to be carried: -25 °C to +85 °C.

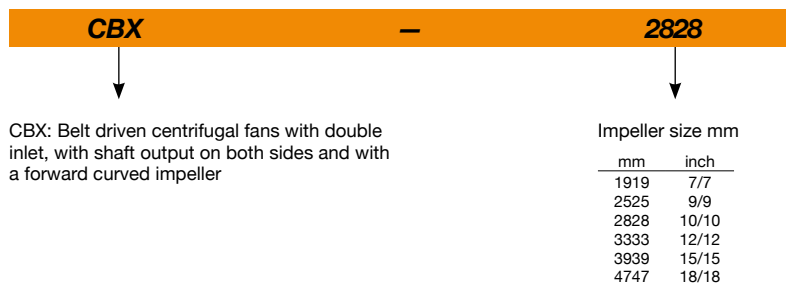
**Finish:**

- Galvanised steel sheet.

**On request:**

- SM motor support and belt tensioner can be supplied.

## Order code



## Technical characteristics

Model	Max. speed (r/min)	Installed power max. (kW)	Maximum flow rate (m³/h)	Air temperature (°C)		Approx. weight (Kg)
				min.	max.	
CBX-1919	2500	1.1	3870	-25	+85	5
CBX-2525	1800	1.5	5830	-25	+85	9
CBX-2828	1700	1.5	6650	-25	+85	11
CBX-3333	1400	1.5	8190	-25	+85	16
CBX-3939	1000	1.5	11020	-25	+85	24
CBX-4747	700	1.5	15320	-25	+85	34

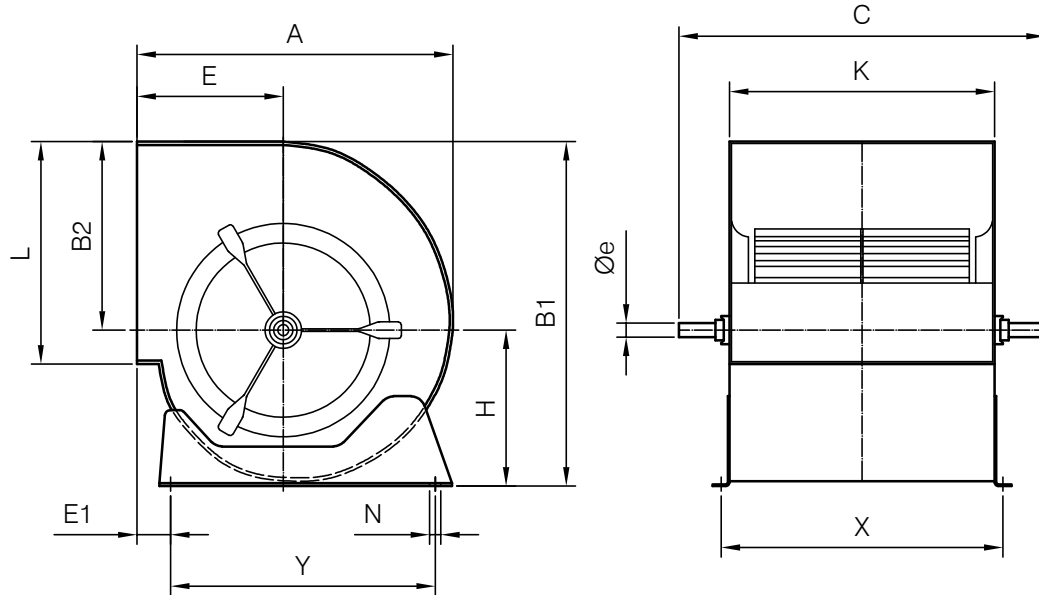


### Erp. (Energy Related Products)

Information on Directive 2009/125/EC can be downloaded from the SODECA website or the QuickFan selector programme.

## Dimensions mm

Standard supply: RD 90



	Equivalence inches	A	B1	B2	C	E	E1	H	K	L	N	Øe	X	Y
CBX-1919	7/7	316	333	189	360	152	64	144	230	208	9x13	20	258	225
CBX-2525	9/9	380	400	218	430	183	78	182	300	263	9x13	20	328	275
CBX-2828	10/10	422	450	246	470	202	73	204	326	292	9x17	20	355	315
CBX-3333	12/12	493	526	290	560	230	82	236	387	345	9x17	25	415	390
CBX-3939	15/15	579	621	348	650	265	92	273	473	404	9x17	25	500	455
CBX-4747	18/18	686	746	415	750	323	82	331	540	482	9x17	25	568	575

## Accessories



INT



VSD3/A-RFT  
- VSD1/A-RFM



PSB



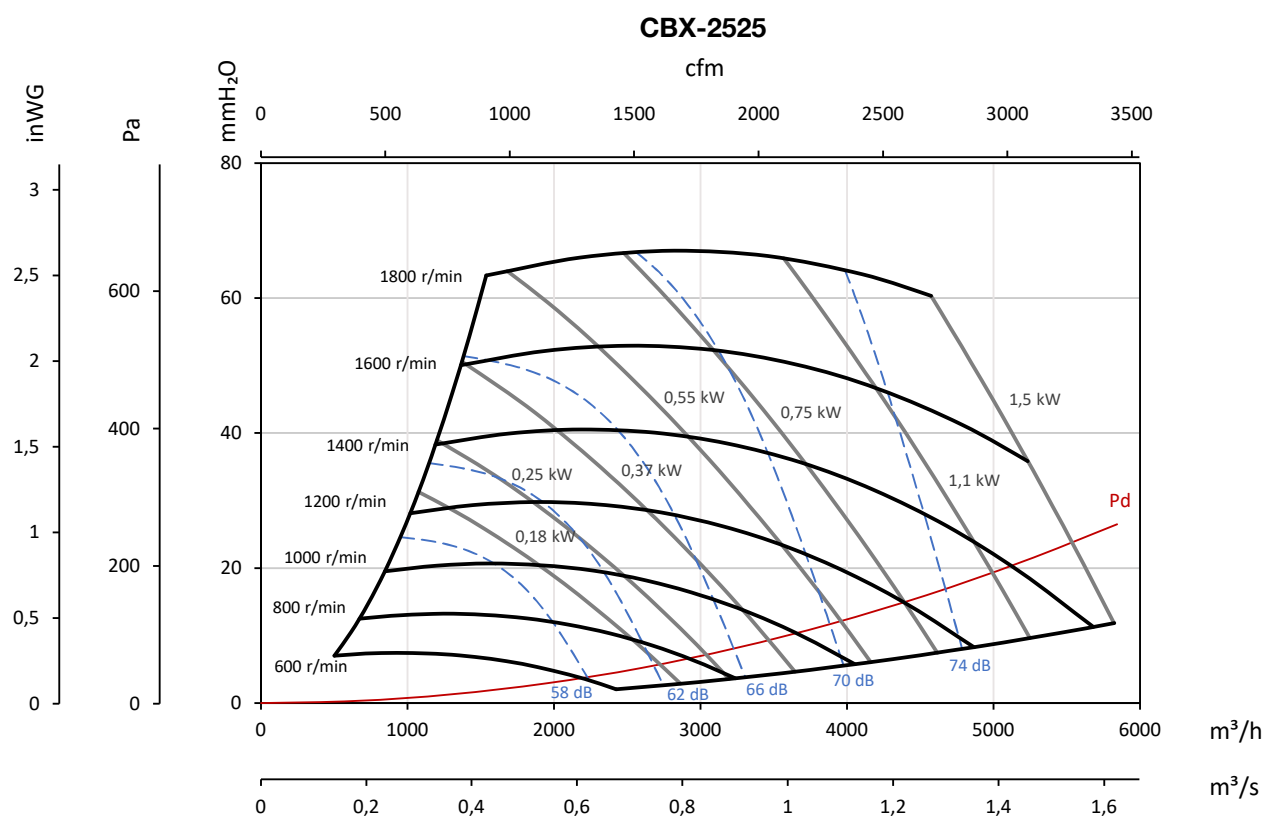
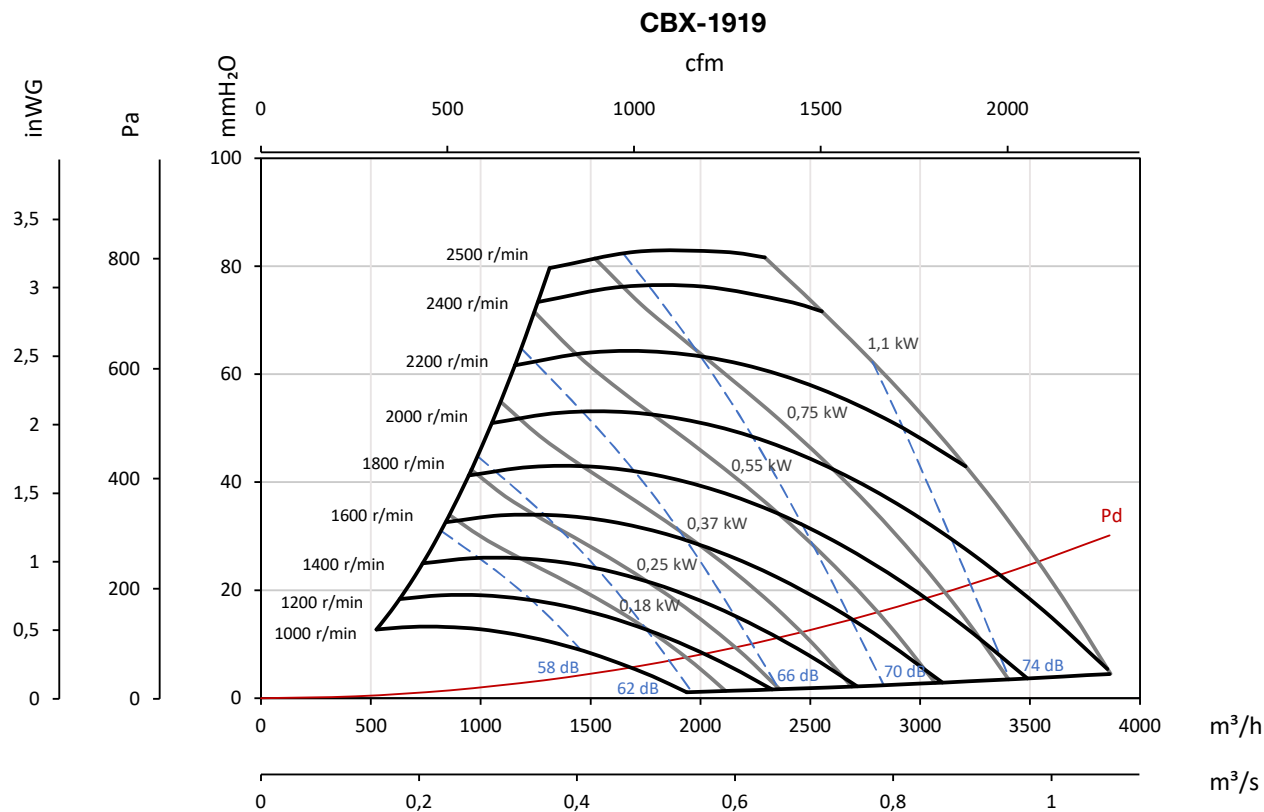
SM

### Characteristic curves

Q= Flow rate in m<sup>3</sup>/h, m<sup>3</sup>/s and cfm

Pe= Static pressure in mm H<sub>2</sub>O, Pa and inWG

The noise levels indicated in the curves are at inlet pressures measured in a free field at 3 m.

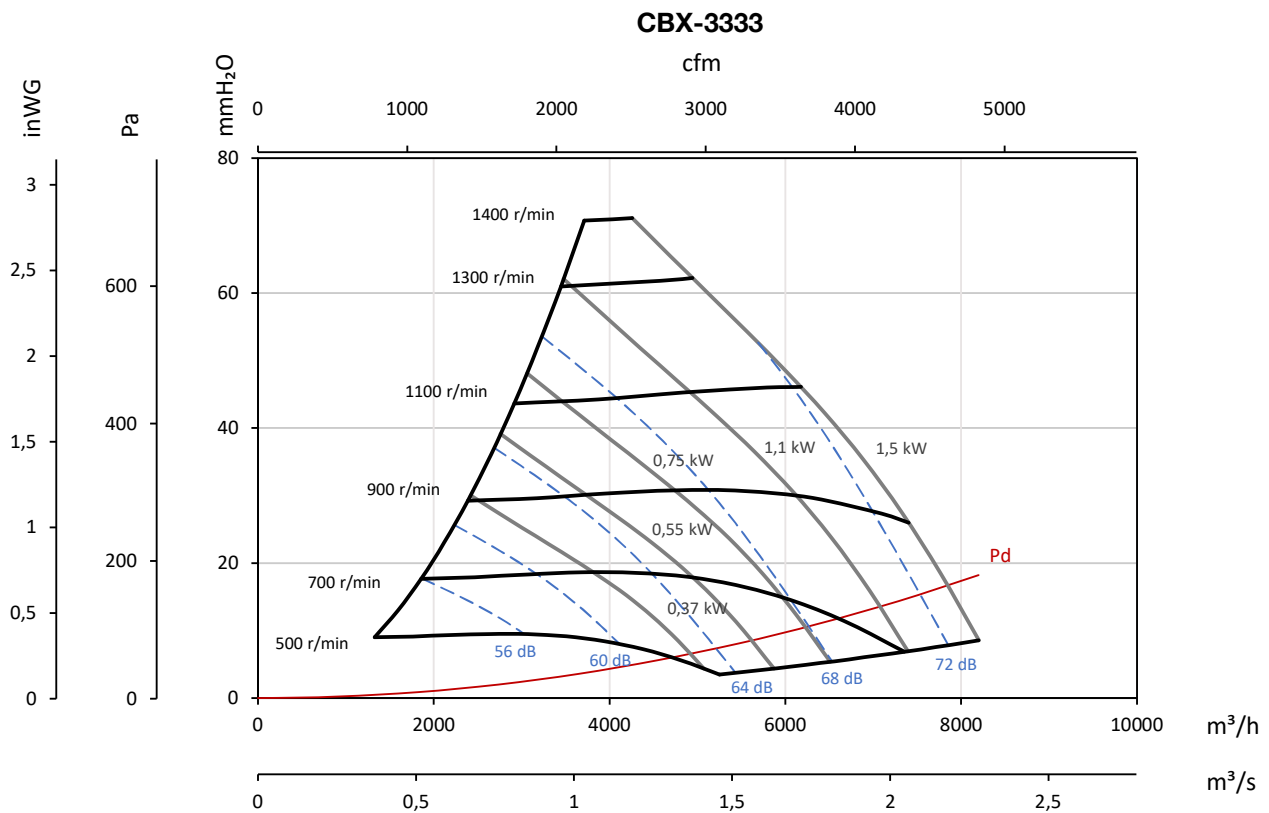
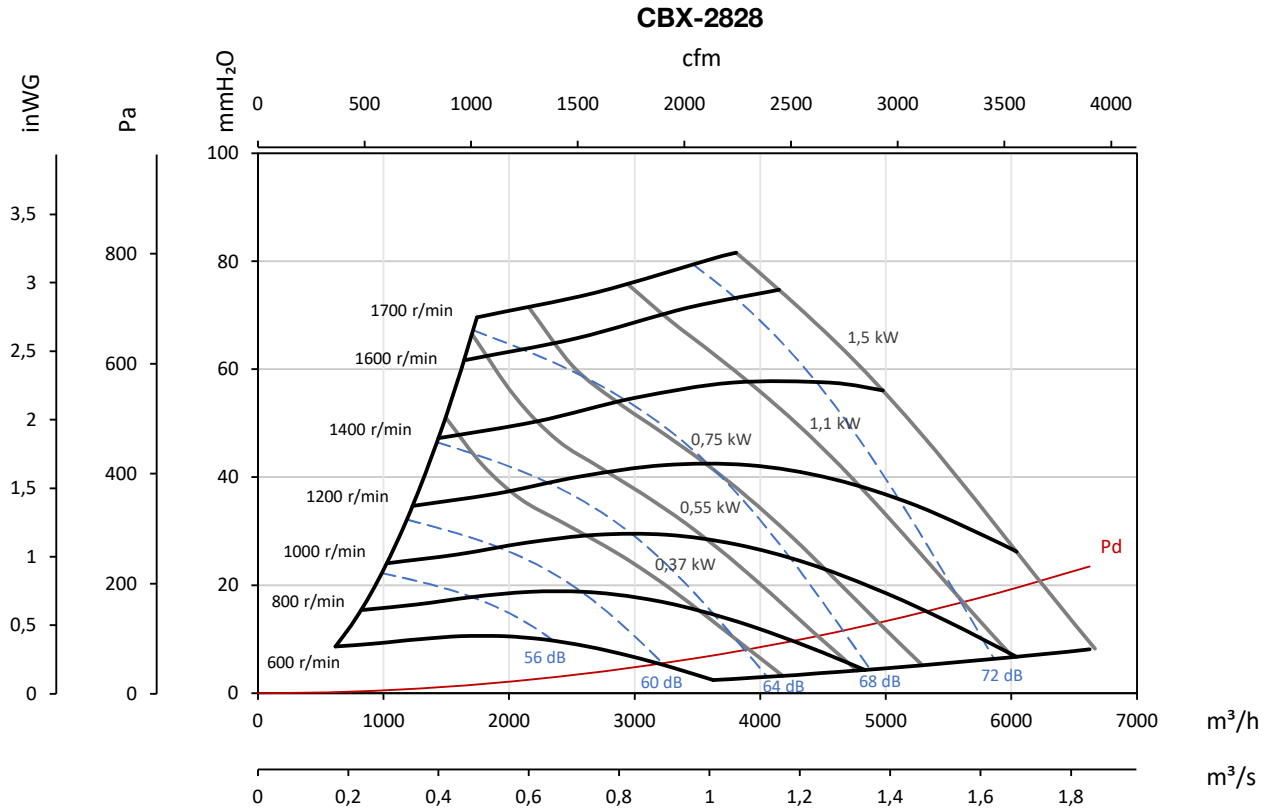


### Characteristic curves

Q= Flow rate in m<sup>3</sup>/h, m<sup>3</sup>/s and cfm

Pe= Static pressure in mm H<sub>2</sub>O, Pa and inwg

The noise levels indicated in the curves are at inlet pressures measured in a free field at 3 m.



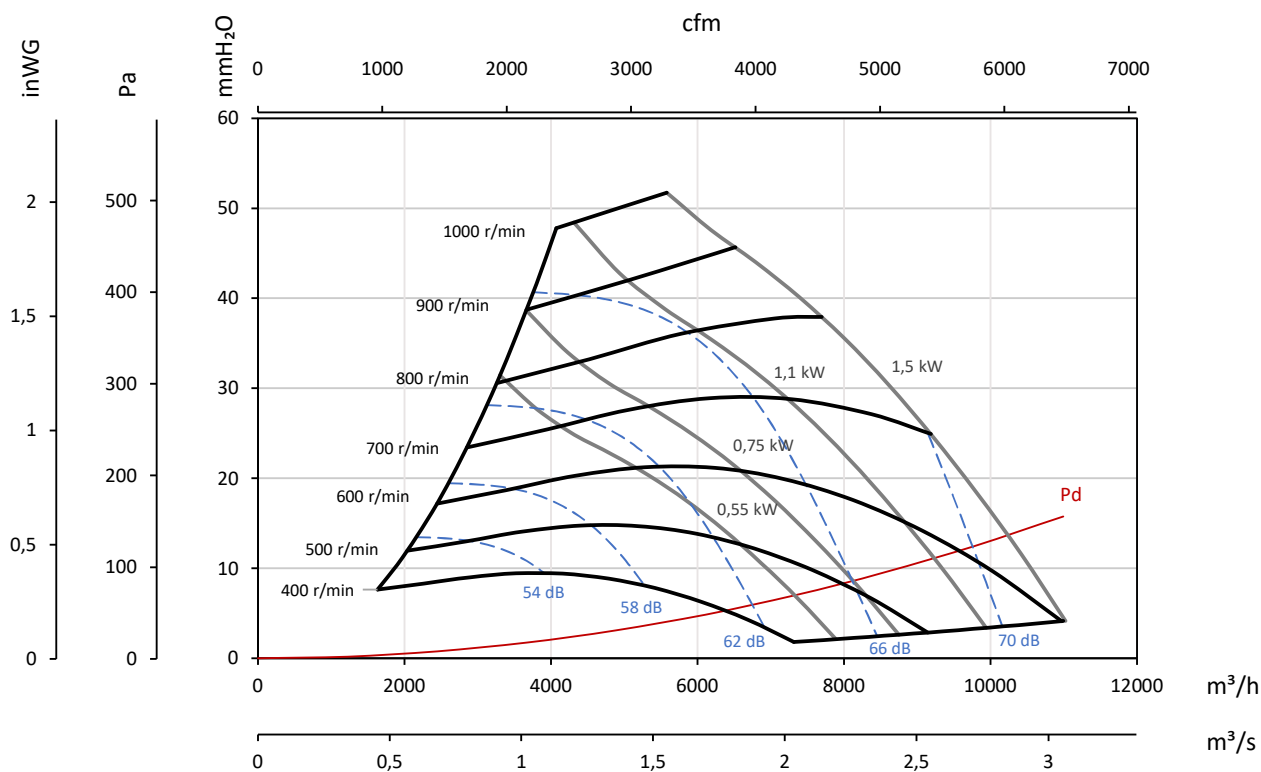
### Characteristic curves

Q= Flow rate in m<sup>3</sup>/h, m<sup>3</sup>/s and cfm

Pe= Static pressure in mm H<sub>2</sub>O, Pa and inwg

The noise levels indicated in the curves are at inlet pressures measured in a free field at 3 m.

#### CBX-3939



#### CBX-4747

