

TSA

Belt driven centrifugal fans with single inlet with shaft output and forward curved impeller



- Fan:
- Galvanised steel sheet casing.
 - Forward curved impeller in galvanised sheet steel.
 - Temperature of the air to be carried: -25 °C to +85 °C.
- Finish:
- Galvanised steel sheet.

Order code



Technical characteristics

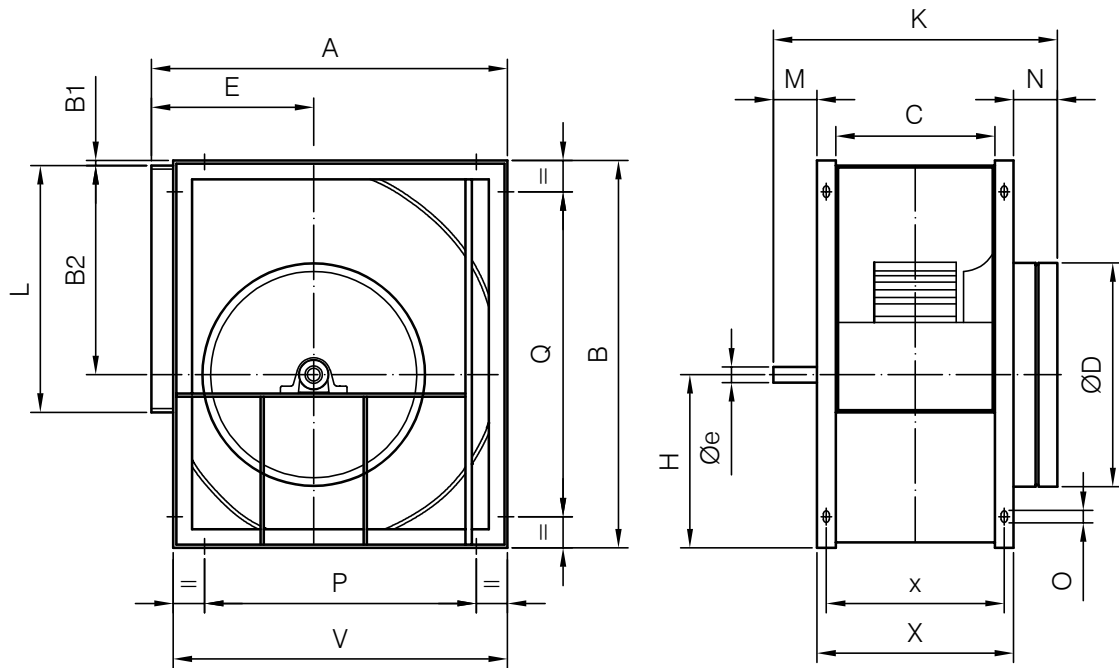
Model	Max. speed	Installed power max.	Maximum flow rate	Air temperature (°C)		Approx. weight (Kg)
	(r/min)			(kW)	(m ³ /h)	
TSA-12/6	1600	2.2	5020	-25	85	18
TSA-15/7	1100	3.0	7600	-25	85	23
TSA-18/9	1000	4.0	10990	-25	85	33
TSA-20/10	900	5.5	15760	-25	85	71
TSA-22/11	1000	18.5	27030	-25	85	80
TSA-25/13	900	18.5	34050	-25	85	93
TSA-30/14	600	18.5	41400	-25	85	125



Erp. (Energy Related Products)

Information on Directive 2009/125/EC can be downloaded from the SODECA website or the QuickFan selector programme.

Dimensions mm



	A	B	B1	B2	C	øD	E	øe	H	K	L	M	N	O	P	Q	V	X	x
TSA-12/6	498	532	-	290	210	317	230	25	242	435	345	75	90	9x17	324	324	468	270	242
TSA-15/7	583	632	-	348	269	400	265	25	284	494	404	75	90	9x17	406	406	553	329	301
TSA-18/9	694	756	-	415	301	480	323	25	341	526	482	75	90	9x17	520	608	664	361	333
TSA-20/10	843	963	35	523	330	582	375	35	440	620	603	100	110	9x17	646	811	798	410	370
TSA-22/11	913	1046	35	569	358	625	400	35	477	648	693	100	110	9x17	716	894	868	438	398
TSA-25/13	998	1161	35	642	412	703	423	35	519	701	793	100	110	9x17	801	1009	953	492	452
TSA-30/14	1206	1400	35	776	474	804	515	40	624	764	933	100	110	9x17	1009	1248	1161	554	514

Accessories



INT



VSD3/A-RFT
- VSD1/A-RFM



AET



VIS



ACE ACE/400



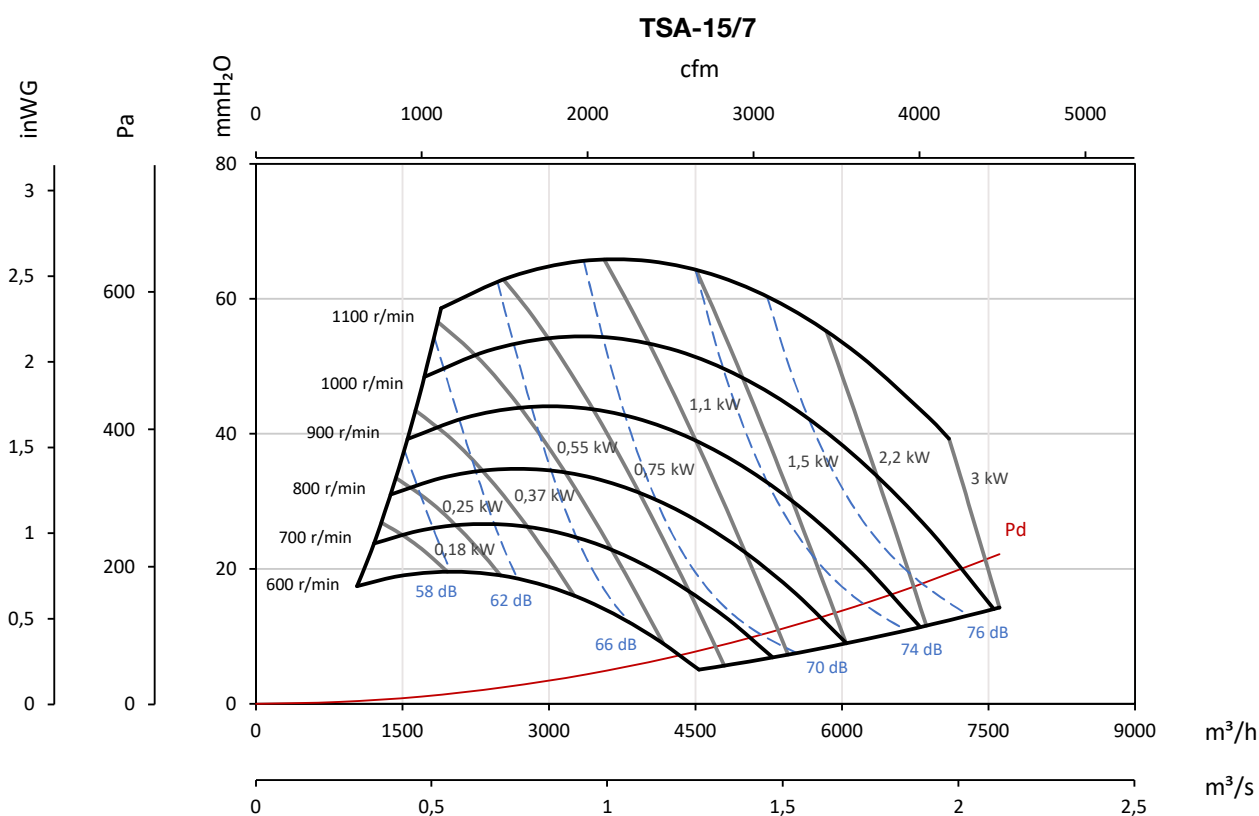
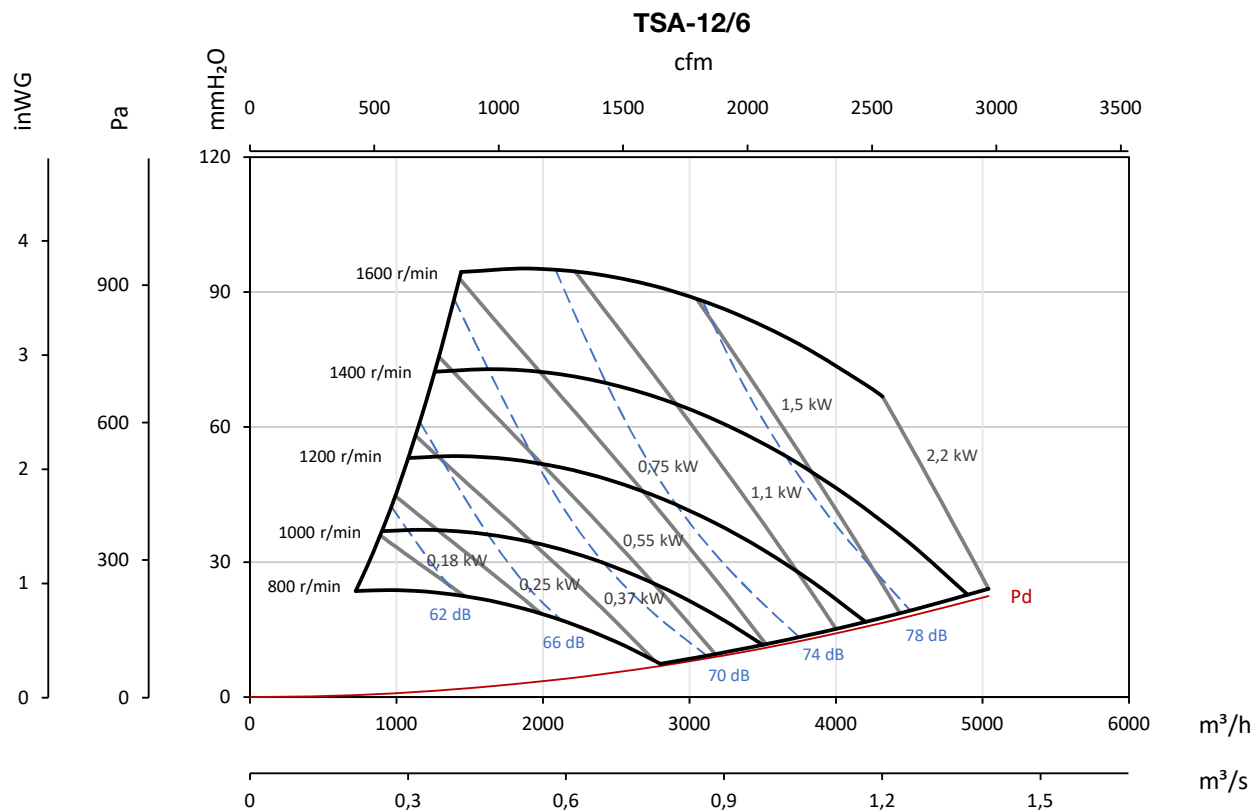
TEJ

Characteristic curves

Q= Flow rate in m³/h, m³/s and cfm

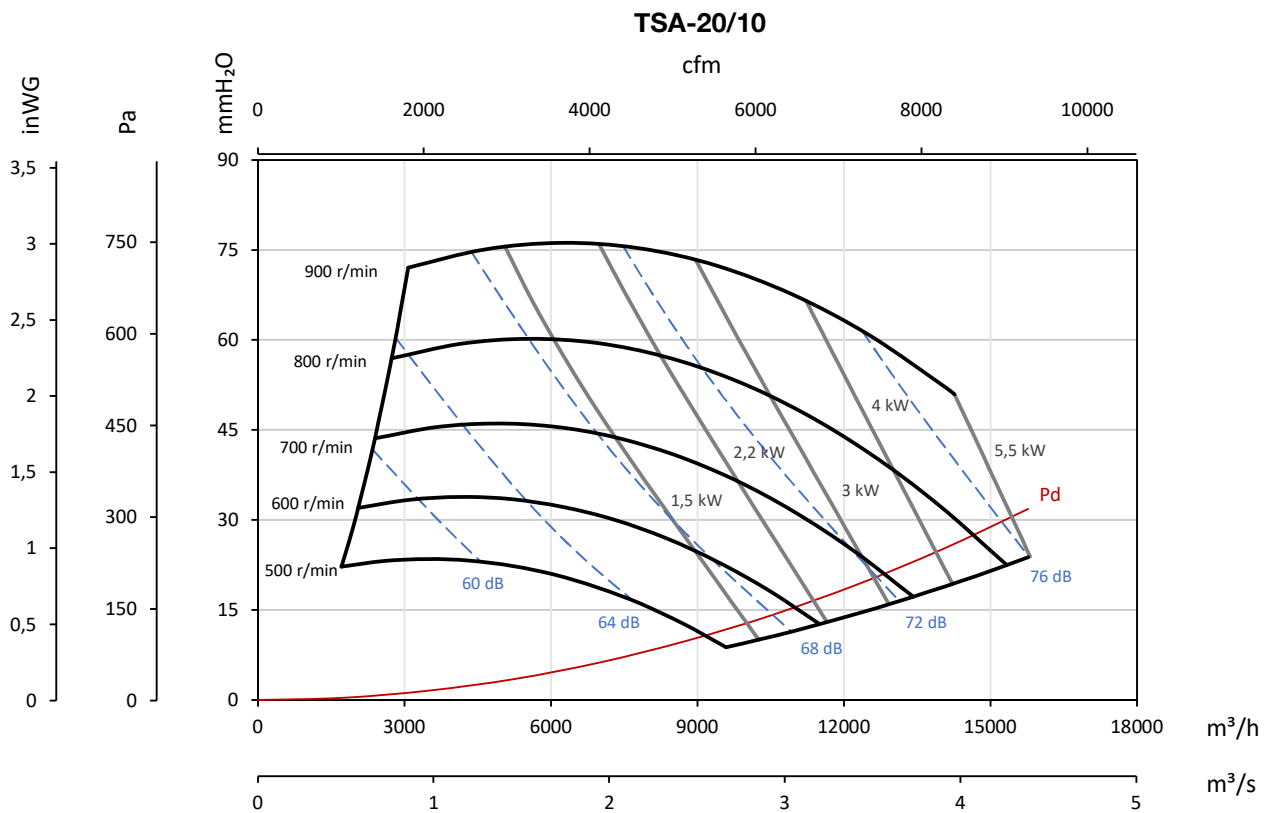
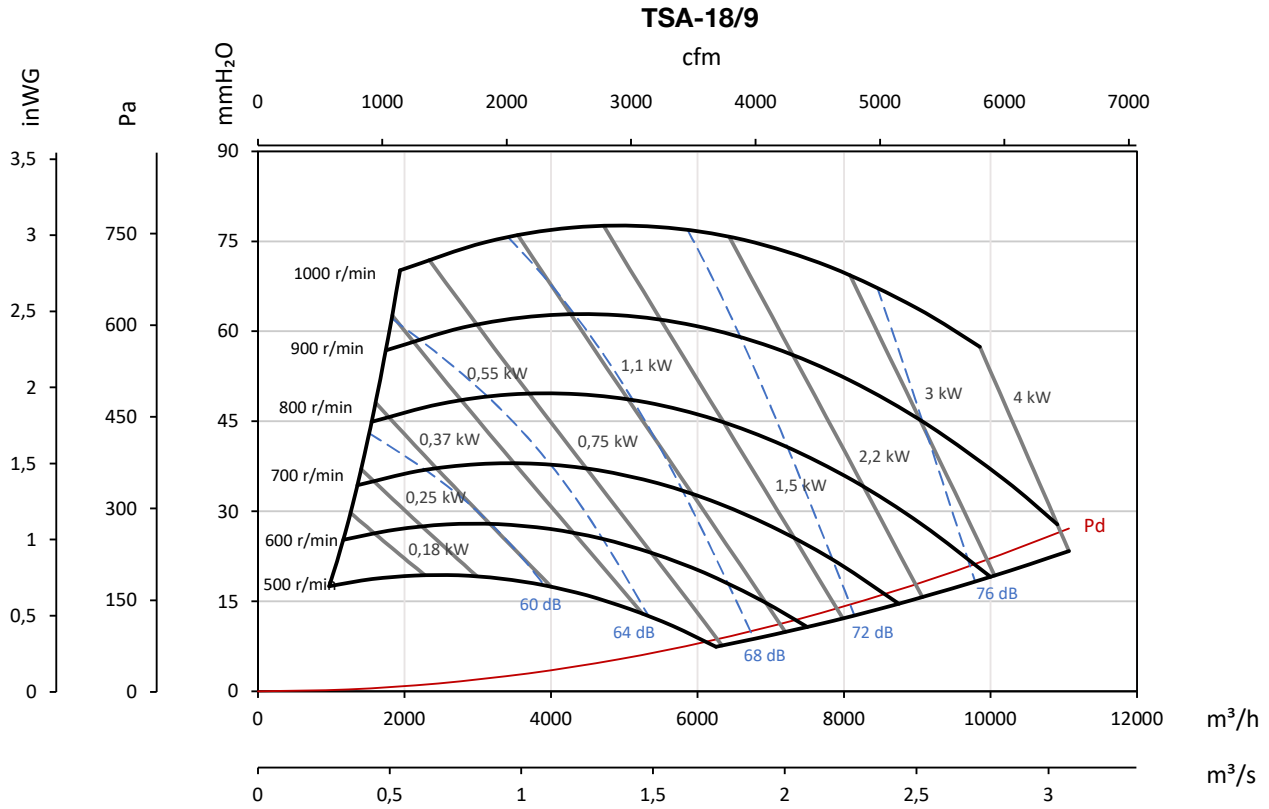
Pe= Static pressure in mm H₂O, Pa and inWG

The noise levels indicated in the curves are at inlet pressures measured in a free field at 3 m.



Characteristic curves

Q= Flow rate in m³/h, m³/s and cfm Pe= Static pressure in mm H₂O, Pa and inwg
 The noise levels indicated in the curves are at inlet pressures measured in a free field at 3 m.

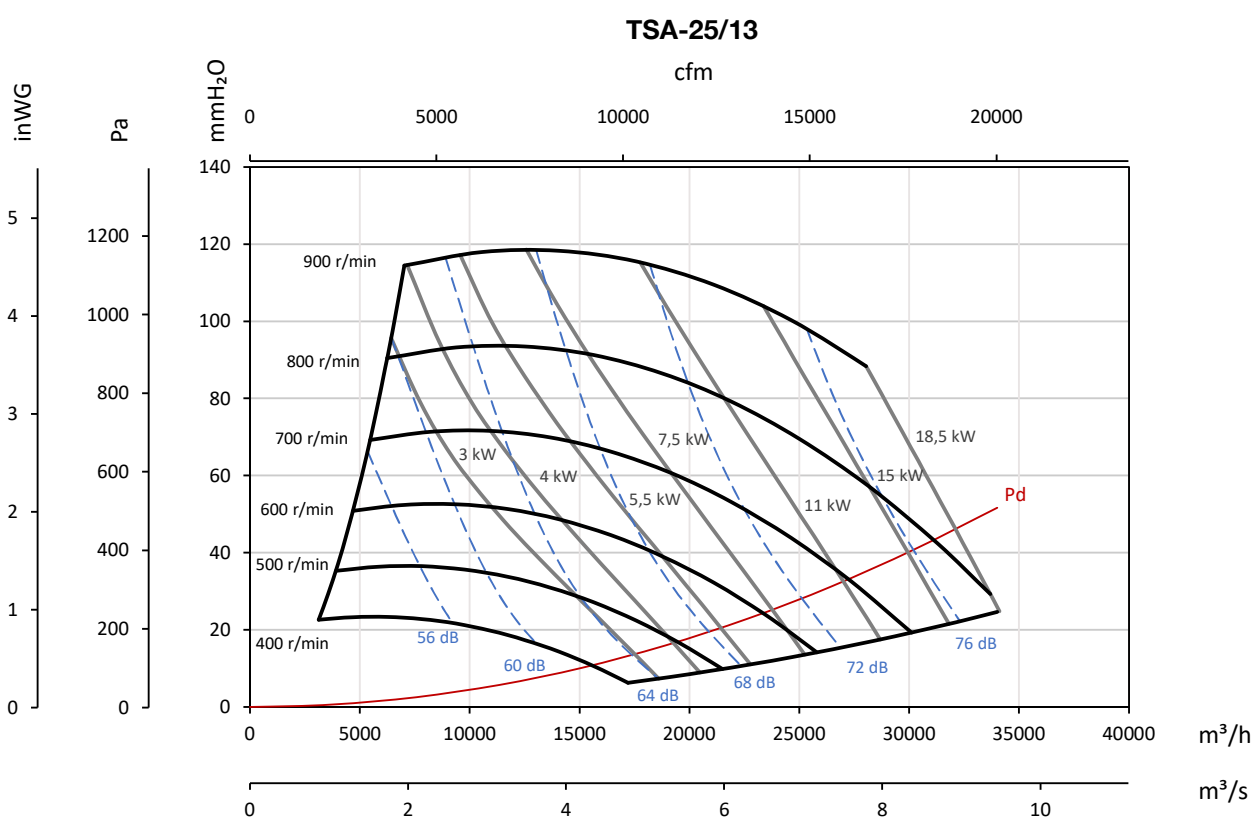
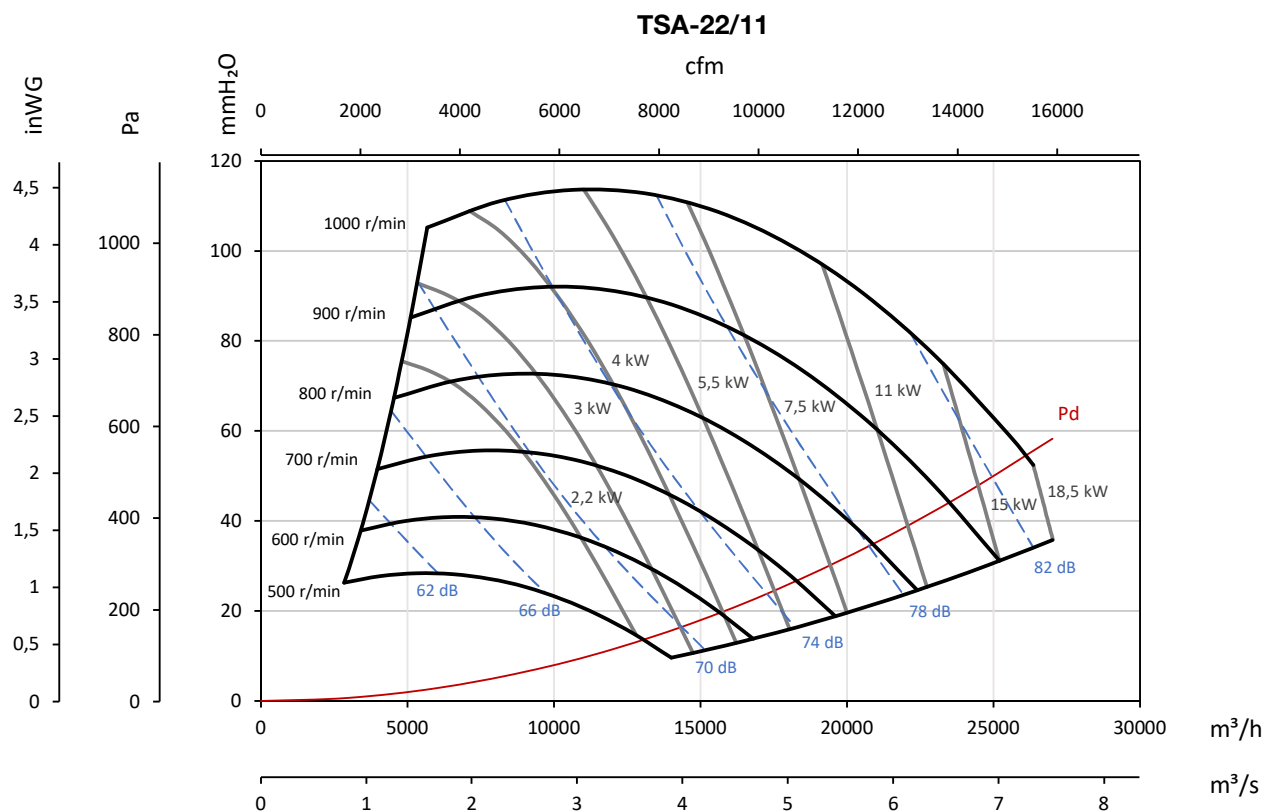


Characteristic curves

Q= Flow rate in m³/h, m³/s and cfm

Pe= Static pressure in mm H₂O, Pa and inWG

The noise levels indicated in the curves are at inlet pressures measured in a free field at 3 m.



Characteristic curves

Q= Flow rate in m³/h, m³/s and cfm Pe= Static pressure in mm H₂O, Pa and inwg
 The noise levels indicated in the curves are at inlet pressures measured in a free field at 3 m.

