

AIRHOME

Efficient ventilation equipment for homes with heat recovery units



AIRHOME-150
AIRHOME-300



AIRHOME-350/V



Efficient ventilation equipment for homes with heat recovery. Low power consumption, acoustic comfort and high thermal performance.

Characteristics:

- Controlled mechanical ventilation system based on the extraction of stale air and the supply of fresh air.
- Counterflow heat exchanger.
- With 100% automatic by-pass.
- Centrifugal fan with constant flow control.
- Easy to remove filters for cleaning and maintenance.
- Operation compatible 50/60 Hz.
- Built-in filters, quality F7.

- Interior in lightweight expanded polypropylene and with low noise emissions.
- Low profile models for false ceiling installation (AIRHOME-150 and AIRHOME-300).
- Control compatible with MODBUS RTU.

On request:

- Other filter combinations.

Order code

AIRHOME – 150

AIRHOME: Efficient ventilation equipment for homes with heat recovery units

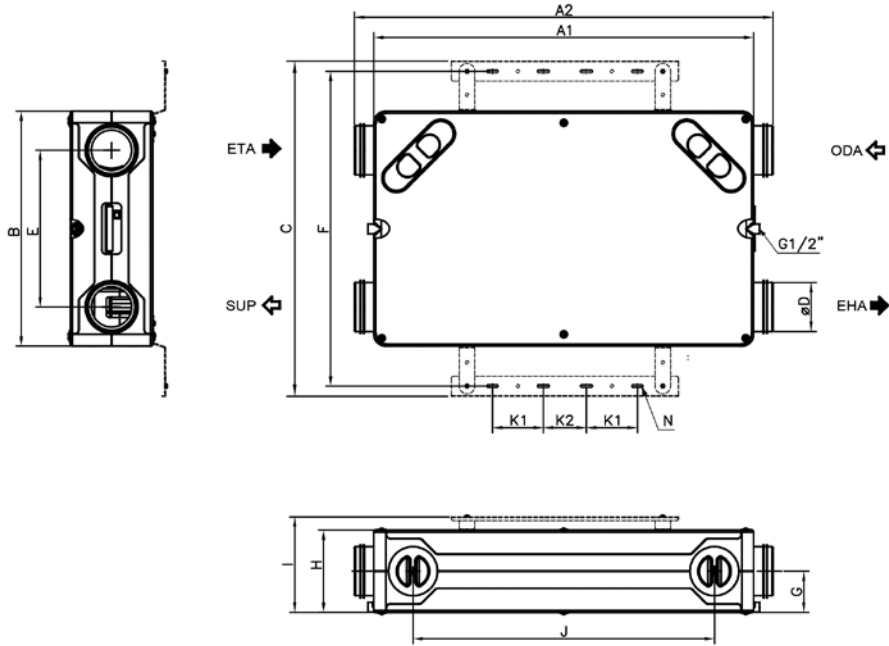
Model

Technical characteristics

Characteristics	AIRHOME-150	AIRHOME-300	AIRHOME-350/V	
Flow rate @100Pa	150 m ³ /h	300 m ³ /h	350 m ³ /h	
Thermal efficiency	EN 308 UNE 13141-7	81.1 % 80.2 %	83.1 % 82.6 %	87.0 % 86.0 %
Constant flow regulation	YES	YES	YES	
Irradiated sound pressure at maximum flow rate (1,5 m) dB (A)	26	36	38	
Electrical power (W)	60	180	267	
Installation	False ceilings/Wall	False ceilings/Wall	Wall	
Interchangeable nozzles	YES	YES	YES	
Nozzles diameter (mm)	125	160	160	
Filters in external air supply	F7	F7	F7	
Remote control	Included	Included	Included	
Compatible with MODBUS RTU	YES	YES	YES	
Sensors in extraction of stale air	T°, RH, VOC, CO2	T°, RH, VOC, CO2	T°, RH	
Dimensions mm	970 x 600 x 210	1170 x 820 x 270	480 x 595 x 905	
Approx. weight (Kg)	23	36	40	

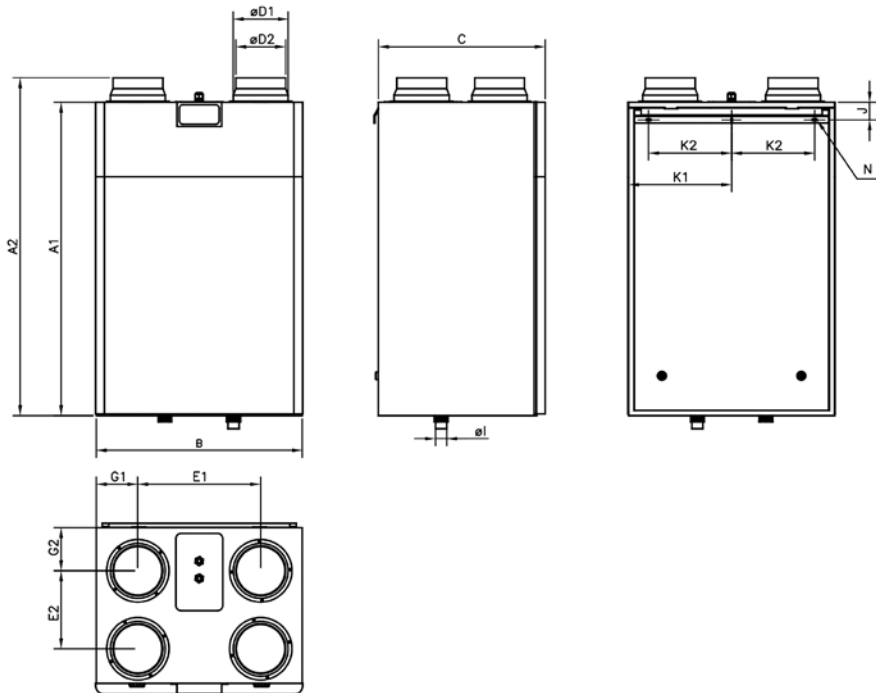
Dimensions mm

**AIRHOME-150
AIRHOME-300**



	A1	A2	B	C	D	E	F	G	H	I	J	K1	K2	N
AIRHOME-150	970	1070	600	855	125	400	803.5	105	210	244	770	130	110	8x30
AIRHOME-300	1140	1270	820	1072	160	510	1020	135	270	304	830	130	110	8x30

AIRHOME-350/V



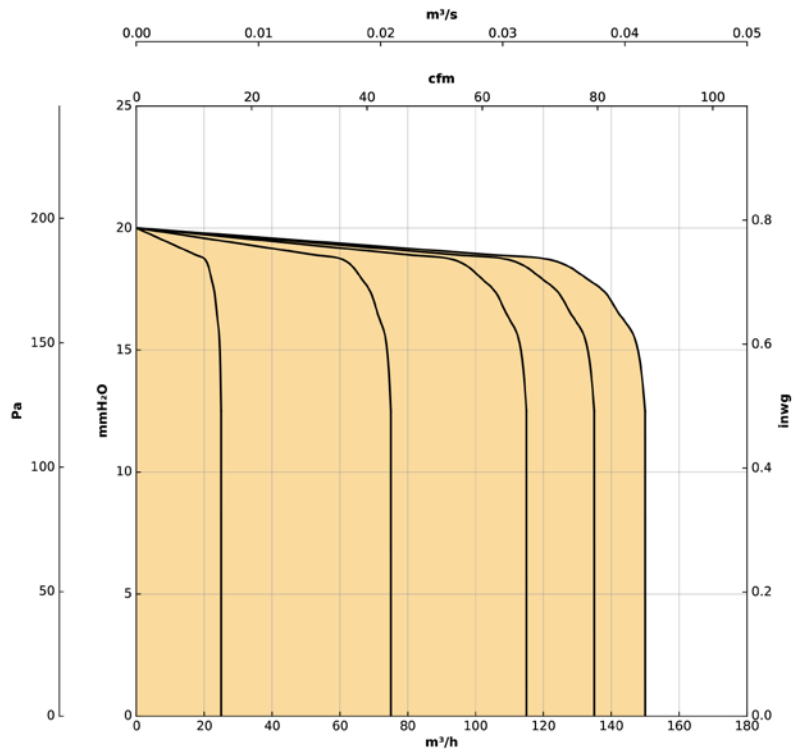
	A1	A2	B	C	D1	D2	E1	E2	G1	G2	I	J	K1	K2	N
AIRHOME-350/V	905	975	595	480	160	144	350	220	122.5	125.5	32	57	297	240	5.2x10

Characteristic curves

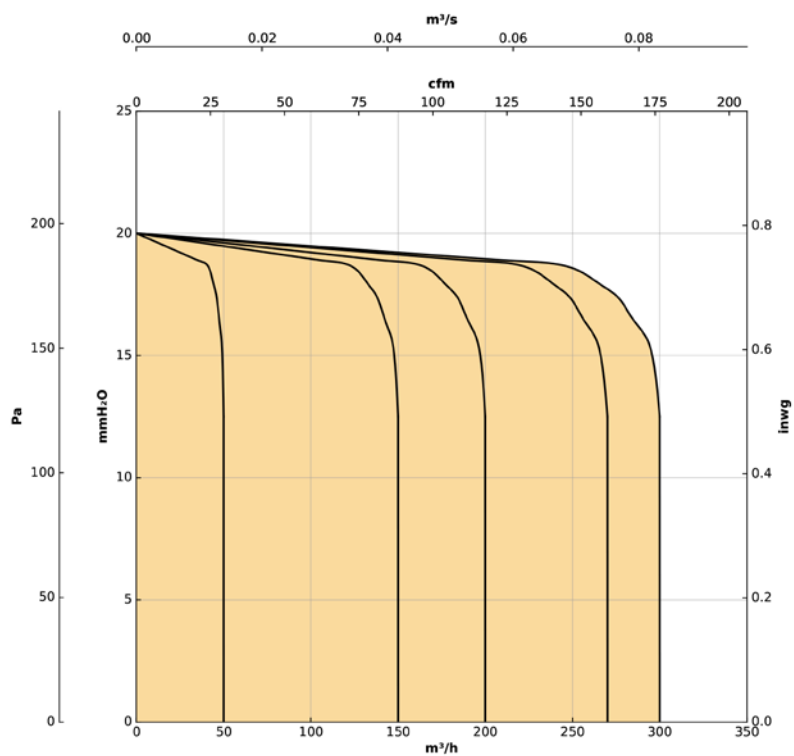
Q= Flow rate in m³/h, m³/s and cfm

Pe= Static pressure in mm H₂O, Pa and inwg

AIRHOME-150



AIRHOME-300

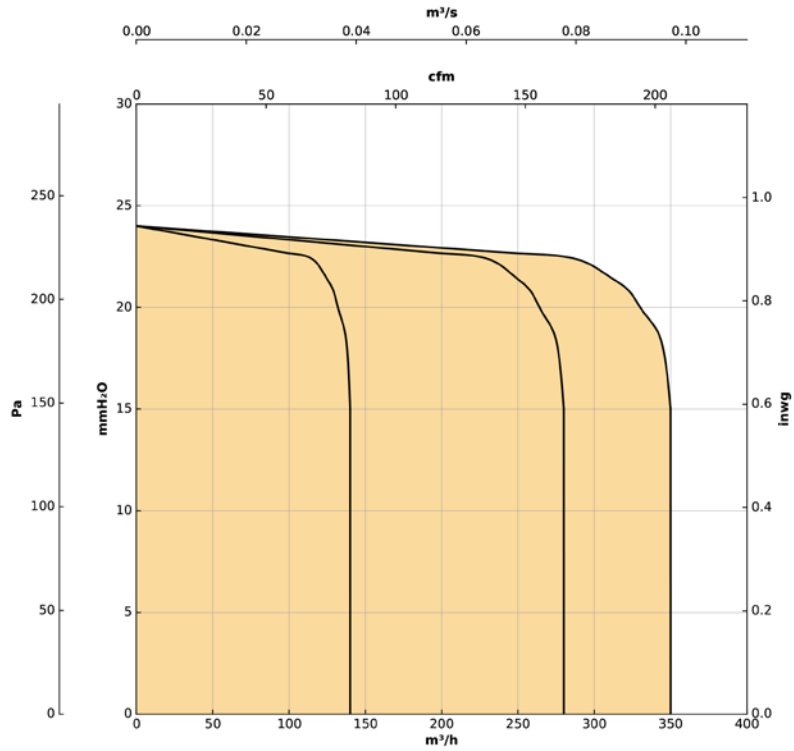


Characteristic curves

Q= Flow rate in m³/h, m³/s and cfm

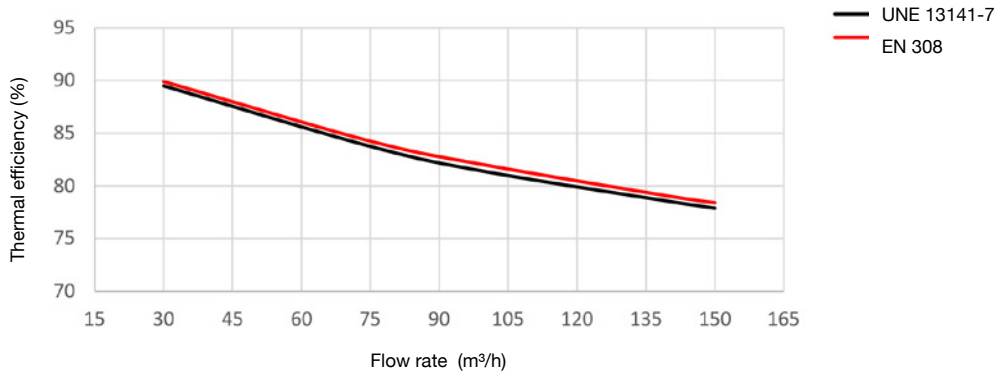
Pe= Static pressure in mm H₂O, Pa and inwg

AIRHOME-350/V

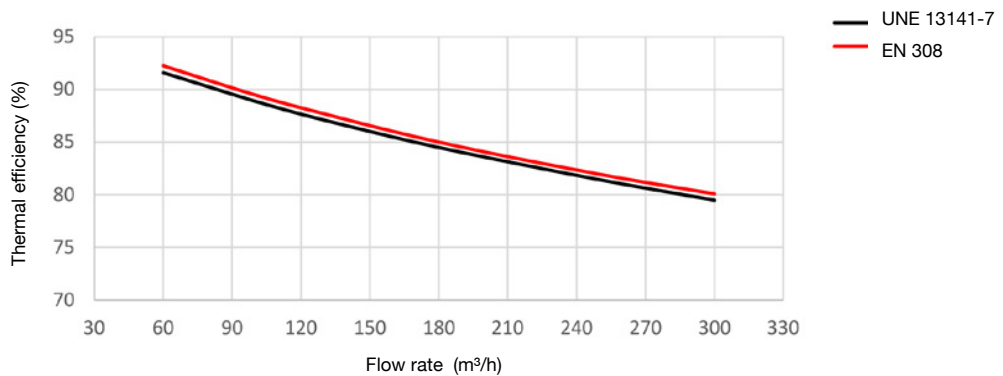


Efficiency curves

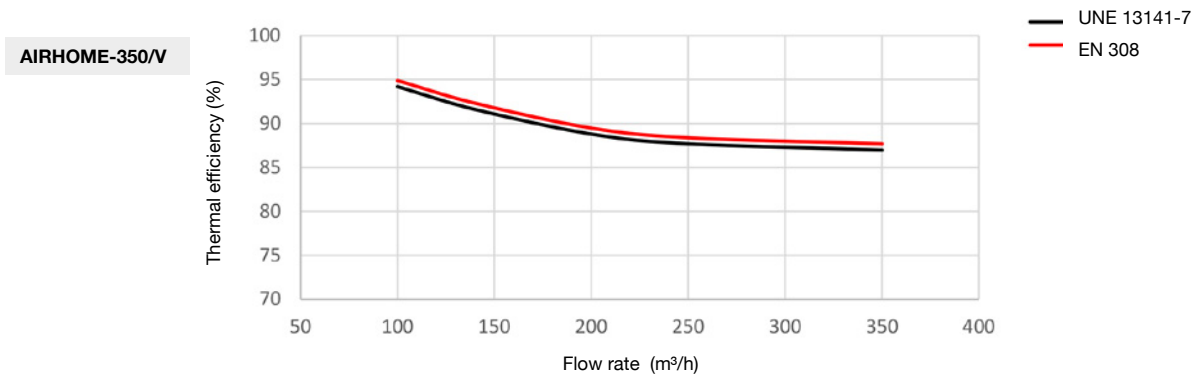
AIRHOME-150



AIRHOME-300



Efficiency curves



Accessories

